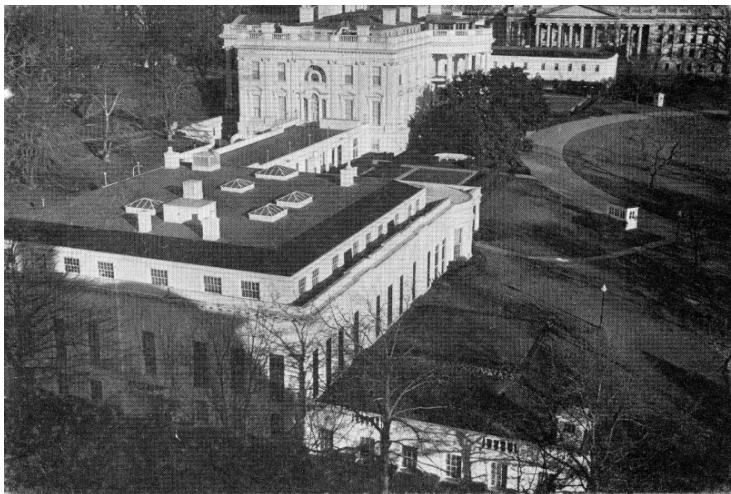


# West wing of the White House



## Description

West wing of the White House.

## Date(s)

ca.

1948

**Accession Number** 58-6

4x6.5 inches    Black & White

**Keywords** Dwellings    Historic buildings    Offices

**HST Keywords** White House - Exterior - West Wing

**Rights** The Library is unaware of any copyright claims to this item; use at your own risk.

**Note: If you use this image, rights assessment and attribution are your responsibility.**

Harry S. Truman Library & Museum.

Attention media: Please make note of this item's accession number. Print out this page and retain it for your permissions records before downloading this image file for possible publication. Library staff cannot sign permissions forms or provide additional paperwork. The Library charges no usage fees for downloaded images.