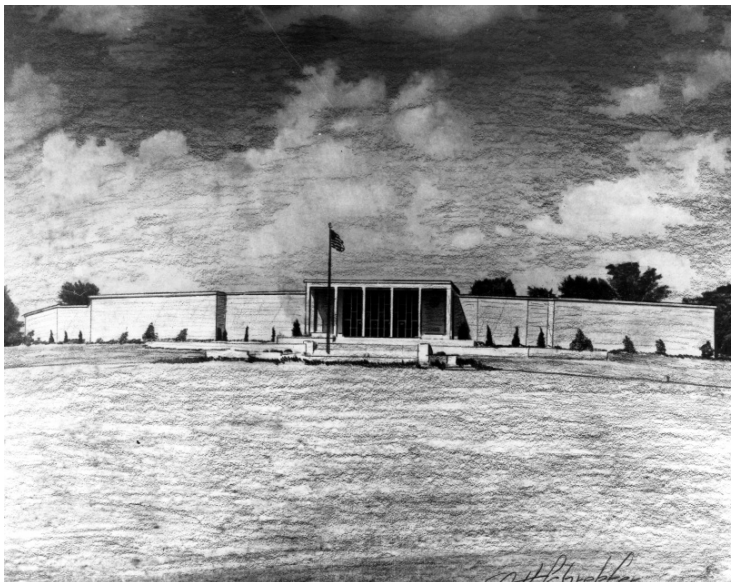


# Drawing of the Truman Library



## Description

Kodalith drawing of the exterior of the Harry S. Truman Library from U. S. Highway 24, artist unknown.

## Date(s)

September 15, 1957

**Accession Number** 58-379

8x10 inches (21x26 cm)      Black & White

**Keywords** Drawing      Presidential libraries

**HST Keywords** Truman Library - Plans - Exterior - Artist Concept

**Rights** Public Domain - This item is in the public domain and can be used freely without further permission.

**Note: If you use this image, rights assessment and attribution are your responsibility.**

**Credit:** Cecil H. Schrepfer      Harry S. Truman Library      Harry S. Truman Library & Museum.

Attention media: Please make note of this item's accession number. Print out this page and retain it for your permissions records before downloading this image file for possible publication. Library staff cannot sign permissions forms or provide additional paperwork. The Library charges no usage fees for downloaded images.