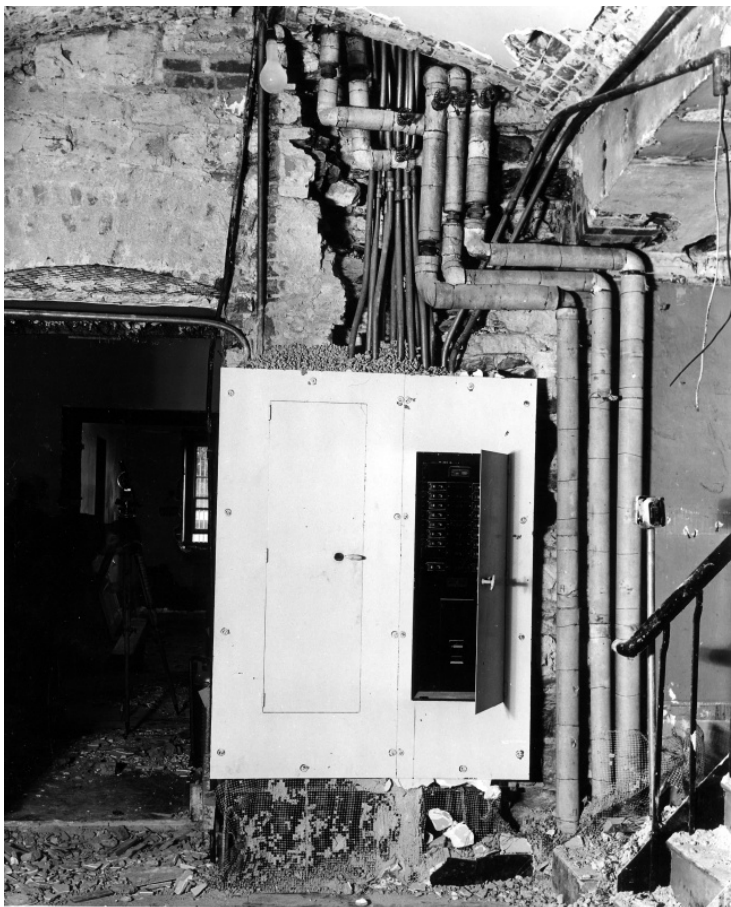


South wall of Pantry (G-17) in the White House



Description

South wall of Pantry (G-17), taken during the renovation of the White House.

Date(s)

January 3, 1950

Accession Number 58-531-031

8x10 inches (21x26 cm) Black & White

Keywords Building repair and reconstruction Dwellings Presidential residences Renovation (Architecture)
Historic buildings

HST Keywords White House - Miscellaneous - Renovation

Rights Public Domain - This item is in the public domain and can be used freely without further permission.

Note: If you use this image, rights assessment and attribution are your responsibility.

Credit: Abbie Rowe National Park Service Harry S. Truman Library & Museum.

Attention media: Please make note of this item's accession number. Print out this page and retain it for your permissions records before downloading this image file for possible publication. Library staff cannot sign permissions forms or provide additional paperwork. The Library charges no usage fees for downloaded images.