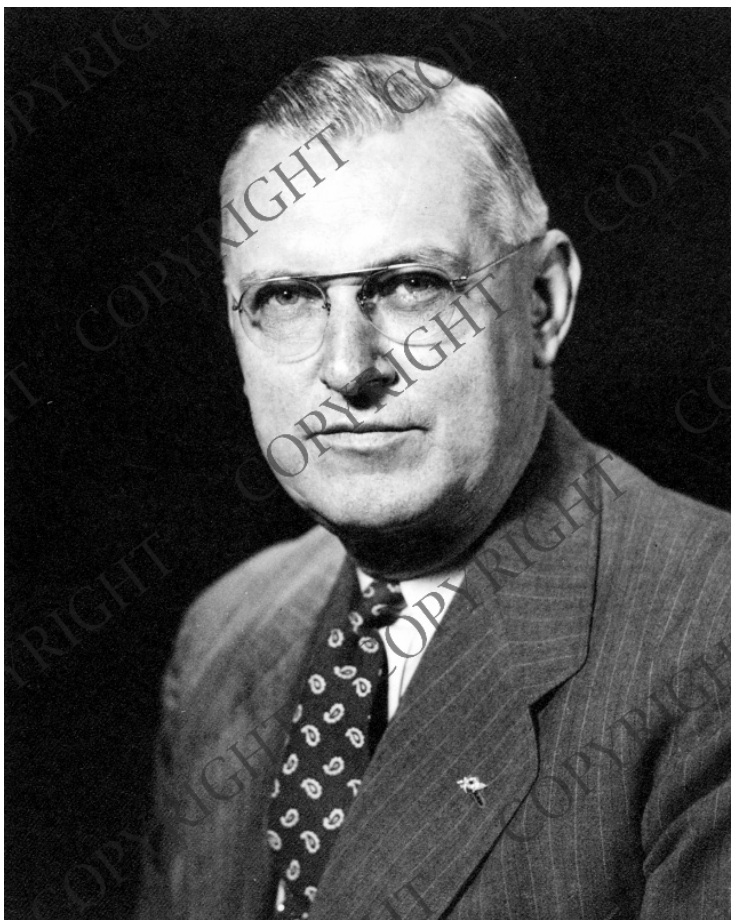


# Portrait of John Steelman



## Description

Portrait of John R. Steelman, Assistant to the President.

## Date(s)

ca.  
1949

**Accession Number** 59-94

8x10 inches (21x26 cm)      Black & White

**Keywords** Presidential advisors      White House staff

**People Pictured** Steelman, John Roy, 1900-1999

**Rights** Copyrighted - This item is copyrighted and cannot be published, reproduced, or otherwise used without the explicit permission of the copyright holder.

**Note: If you use this image, rights assessment and attribution are your responsibility.**

**Credit:** Maurice Constant      Harry S. Truman Library & Museum.

Attention media: Please make note of this item's accession number. Print out this page and retain it for your permissions records before downloading this image file for possible publication. Library staff cannot sign permissions forms or provide additional paperwork. The Library charges no usage fees for downloaded images.