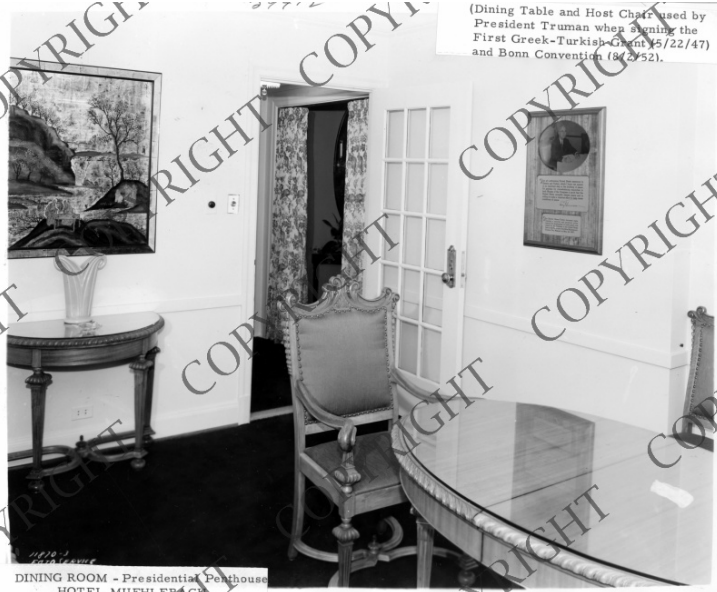


# The dining room of the Presidential Penthouse at the Hotel Muehlebach



## Description

The dining room of the Presidential Penthouse at the Hotel Muehlebach in Kansas City, Missouri. The dining room and host chair was used by President Truman when signing the First Greek-Turkish Grant (May 22, 1947), also called the Truman Doctrine, and the Bonn Convention (August 8, 1952). Donor: Robert T. Weatherford

## Date(s)

ca.  
1952

**Accession Number** 59-412

8x10 inches (21x26 cm)      Black & White

**Keywords** Historic buildings      Hotels

**HST Keywords** Hotels - Muehlebach

**Rights** Copyrighted - This item is copyrighted and cannot be published, reproduced, or otherwise used without the explicit permission of the copyright holder.

**Note: If you use this image, rights assessment and attribution are your responsibility.**

**Credit:** Foto Service, Kansas City (Mo.)      Harry S. Truman Library & Museum.

Attention media: Please make note of this item's accession number. Print out this page and retain it for your permissions records before downloading this image file for possible publication. Library staff cannot sign permissions forms or provide additional paperwork. The Library charges no usage fees for downloaded images.