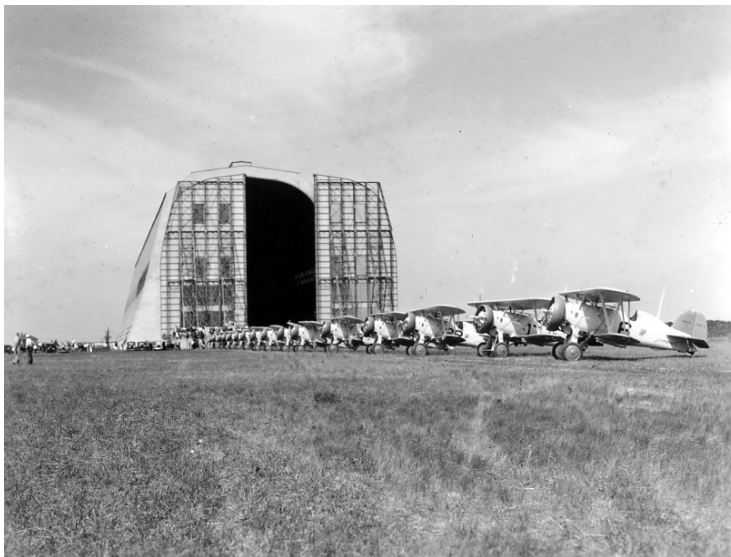


# Biplanes and hangar



## Description

Numerous biplanes parked near a hangar. Part of a series of snapshots taken during James E. Webb's training as a pilot.

## Date(s)

ca.  
1930

**Accession Number** 97-1301

4x5 inches      Black & White

**Related Collection** [Webb, James E. Papers](#)

**Keywords** Airplanes

**HST Keywords** Armed Services - General File - Marines - Webb, James E.; Webb, James E. - Reference To; Airplanes - Biplane

**Rights** The Library is unaware of any copyright claims to this item; use at your own risk.

**Note: If you use this image, rights assessment and attribution are your responsibility.**

Harry S. Truman Library & Museum.

Attention media: Please make note of this item's accession number. Print out this page and retain it for your permissions records before downloading this image file for possible publication. Library staff cannot sign permissions forms or provide additional paperwork. The Library charges no usage fees for downloaded images.