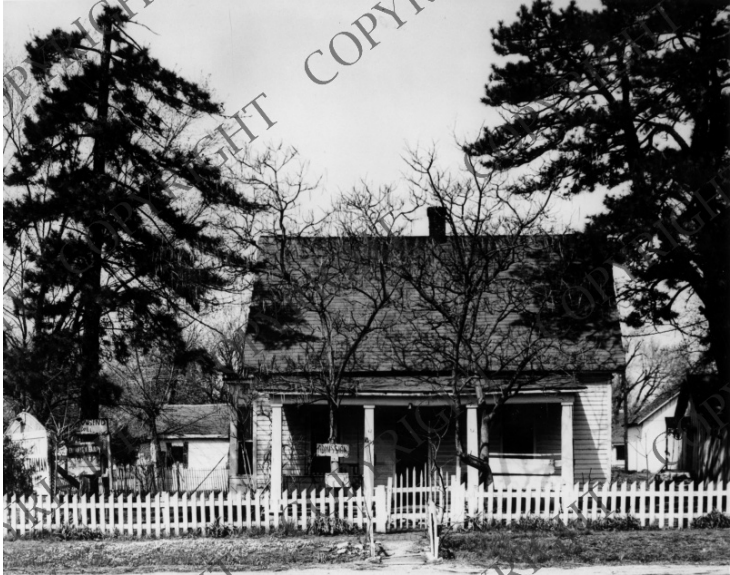


Harry S. Truman birthplace in Lamar, Missouri



Description

Views of the Harry S. Truman birthplace and monument, in Lamar, Missouri.

Date(s)

ca.

1955

Accession Number 59-685

8x10 inches (21x26 cm) Black & White

Keywords Presidential birthplaces Presidential residences

HST Keywords Truman - Homes - Birthplace - Lamar

Rights Copyrighted - This item is copyrighted and cannot be published, reproduced, or otherwise used without the explicit permission of the copyright holder.

Note: If you use this image, rights assessment and attribution are your responsibility.

Credit: John Rickenbaugh A. U. W. Harry S. Truman Library & Museum.

Attention media: Please make note of this item's accession number. Print out this page and retain it for your permissions records before downloading this image file for possible publication. Library staff cannot sign permissions forms or provide additional paperwork. The Library charges no usage fees for downloaded images.