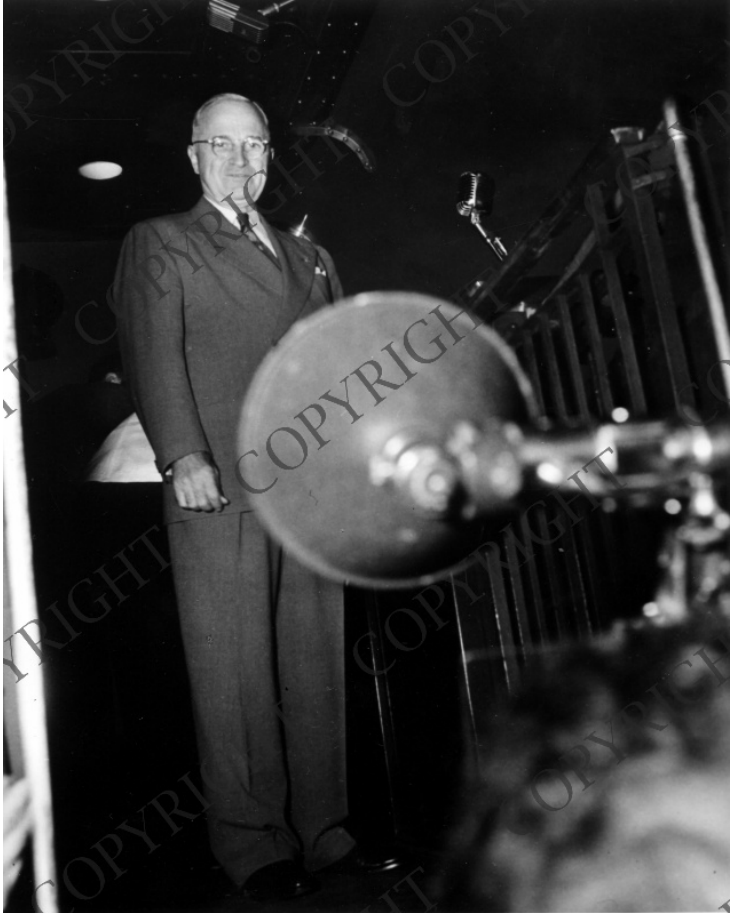


President Truman on rear platform of train in Rock Island, Illinois



Description

President Harry S. Truman stands on the step of the rear platform of a train looking into a photographer's camera. The photo was taken in Rock Island, Illinois, during a whistlestop tour on the 1948 campaign trail. From: Niel Johnson

Date(s)

September 18, 1948

Accession Number 2005-263

5x7 inches (13x18 cm) Black & White

Keywords Presidential campaign trips Presidential campaign, 1948 Presidents Railroads Speeches, addresses, etc.

HST Keywords Truman - Campaigns - Presidential - 1948 - Illinois, Rock Island; Trains - Truman - 1948; Illinois, Rock Island

People Pictured Truman, Harry S., 1884-1972

Rights Copyrighted - This item is copyrighted and cannot be published, reproduced, or otherwise used without the explicit permission of the copyright holder.

Note: If you use this image, rights assessment and attribution are your responsibility.

Credit: Rock Island Argus (Ill.) Harry S. Truman Library & Museum.

Attention media: Please make note of this item's accession number. Print out this page and retain it for your permissions records before downloading this image file for possible publication. Library staff cannot sign permissions

forms or provide additional paperwork. The Library charges no usage fees for downloaded images.