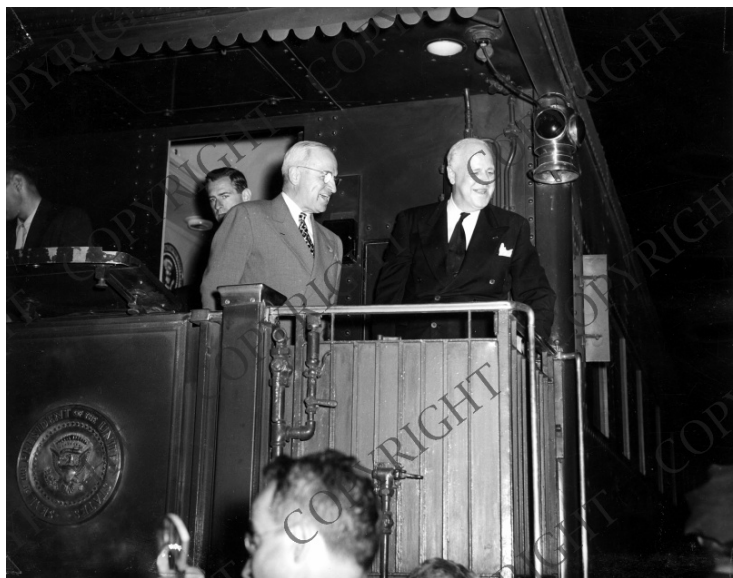


# President Truman on the back of a train



## Description

President Harry S. Truman (second from right) standing on the back of a train with two unidentified men. Additional unidentified men can be seen both inside the train and in front of it. Probably taken during the 1948 Presidential campaign while on a whistlestop tour.

## Date(s)

ca.  
1948

**Accession Number** 59-806

8x10 inches (21x26 cm)      Black & White

**Keywords** Presidents      Railroads

**HST Keywords** Train - Truman Aboard

**People Pictured** Truman, Harry S., 1884-1972

**Rights** Copyrighted - This item is copyrighted and cannot be published, reproduced, or otherwise used without the explicit permission of the copyright holder.

**Note: If you use this image, rights assessment and attribution are your responsibility.**

**Credit:** Maurice Eby      Harry S. Truman Library & Museum.

Attention media: Please make note of this item's accession number. Print out this page and retain it for your permissions records before downloading this image file for possible publication. Library staff cannot sign permissions forms or provide additional paperwork. The Library charges no usage fees for downloaded images.