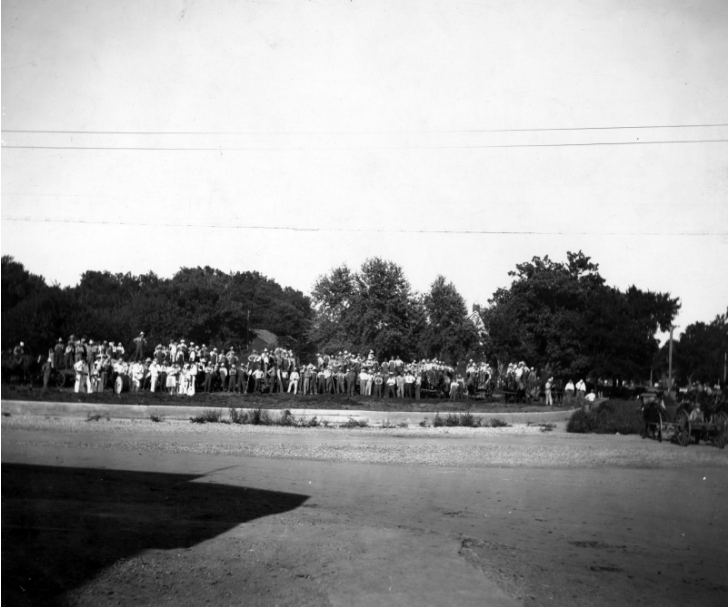


Assemblage of farmers stand at the corner of two roads



Accession Number 2003-172

8x10 inches (21x26 cm) Black & White

Keywords Bands (Music) Crowds Farmers

Rights The Library is unaware of any copyright claims to this item; use at your own risk.

Note: If you use this image, rights assessment and attribution are your responsibility.

Harry S. Truman Library & Museum.

Attention media: Please make note of this item's accession number. Print out this page and retain it for your permissions records before downloading this image file for possible publication. Library staff cannot sign permissions forms or provide additional paperwork. The Library charges no usage fees for downloaded images.

Description

A large assemblage of farmers stand on an elevated curb at the corner of two roads and waits for the arrival of some important personage. Some of the farmers have horse-drawn wagons, and many of the people are standing on the wagons. A small band wearing white uniforms and holding musical instruments stands on the left side of the group. The prevalence of overalls and horse-drawn wagons indicate that this is a farming community early in the 1900's. From: Museum Collection #93.12 (items found inside locked credenza in Harry S. Truman's working office at Truman Library).

Date(s)

ca.
1915