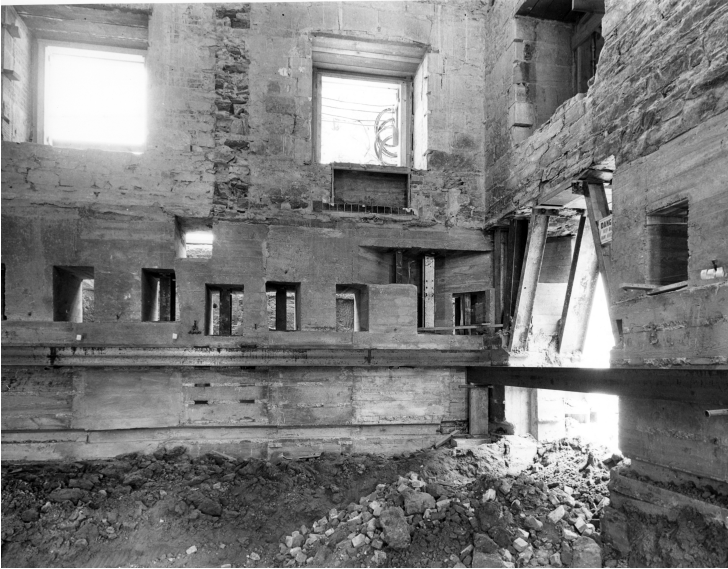


# Northeast corner of the White House during renovation



## Description

Northeast corner of the White House during renovation showing opening in the east wall. The tractor shovel pushes the earth to the pit outside the opening, where it is loaded on trucks by a crane with bucket attachment.

## Date(s)

May 22, 1950

**Accession Number** 71-307

8x10 inches (21x26 cm)    Black & White

**Related Collection** [Harry S. Truman Papers](#)

**Keywords** Building repair and reconstruction    Dwellings    Historic buildings    Presidential residences  
Renovation (Architecture)

**HST Keywords** White House - Miscellaneous - Renovation

**Rights** Public Domain - This item is in the public domain and can be used freely without further permission.

**Note: If you use this image, rights assessment and attribution are your responsibility.**

**Credit:** Abbie Rowe    National Park Service    Harry S. Truman Library & Museum.

Attention media: Please make note of this item's accession number. Print out this page and retain it for your permissions records before downloading this image file for possible publication. Library staff cannot sign permissions forms or provide additional paperwork. The Library charges no usage fees for downloaded images.