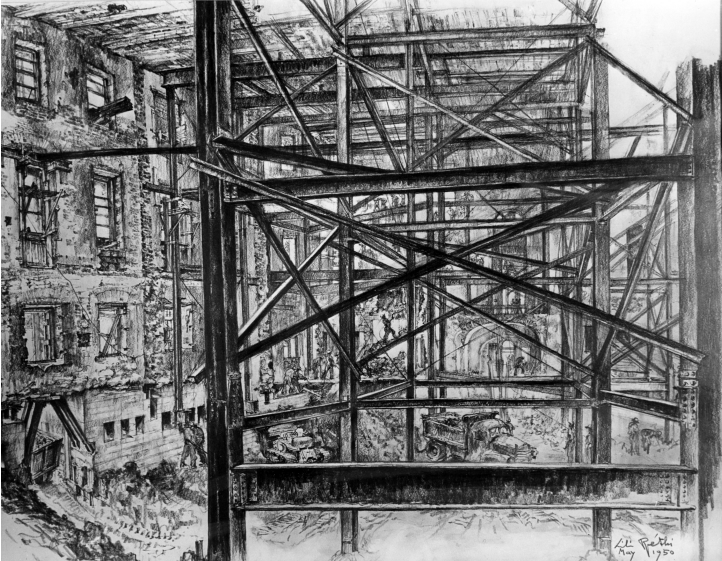


Sketch of interior steel framework during renovation of the White House



Description

Sketch of interior steel framework and excavation work looking west from the east entrance of the Ground Corridor by the artist Lili Rethi. This was prepared during renovation work on the White House.

Date(s)

June 1, 1950

Accession Number 71-321

8x10 inches (21x26 cm) Black & White

Related Collection [Harry S. Truman Papers](#)

Keywords Building repair and reconstruction Dwellings Historic buildings Presidential residences
Renovation (Architecture)

HST Keywords Rethi, Lili; White House - Miscellaneous - Renovation

Rights Public Domain - This item is in the public domain and can be used freely without further permission.

Note: If you use this image, rights assessment and attribution are your responsibility.

Credit: Abbie Rowe National Park Service Harry S. Truman Library & Museum.

Attention media: Please make note of this item's accession number. Print out this page and retain it for your permissions records before downloading this image file for possible publication. Library staff cannot sign permissions forms or provide additional paperwork. The Library charges no usage fees for downloaded images.