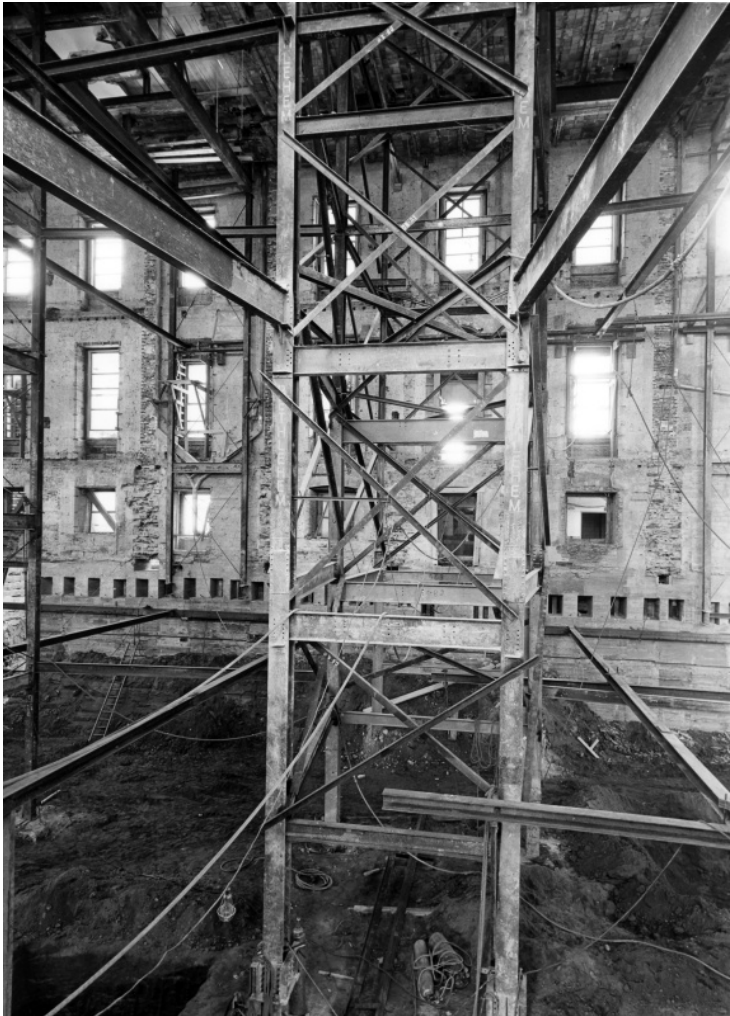


Photograph from concrete beam during renovation of the White House



Description

Photograph from concrete beam at south central part of White House looking north, showing the six permanent vertical steel columns in this area during renovation.

Date(s)

June 12, 1950

Accession Number 71-329

8x10 inches (21x26 cm) Black & White

Related Collection [Harry S. Truman Papers](#)

Keywords Building repair and reconstruction Dwellings Historic buildings Presidential residences
Renovation (Architecture)

HST Keywords White House - Miscellaneous - Renovation

Rights Public Domain - This item is in the public domain and can be used freely without further permission.

Note: If you use this image, rights assessment and attribution are your responsibility.

Credit: Abbie Rowe National Park Service Harry S. Truman Library & Museum.

Attention media: Please make note of this item's accession number. Print out this page and retain it for your permissions records before downloading this image file for possible publication. Library staff cannot sign permissions

forms or provide additional paperwork. The Library charges no usage fees for downloaded images.