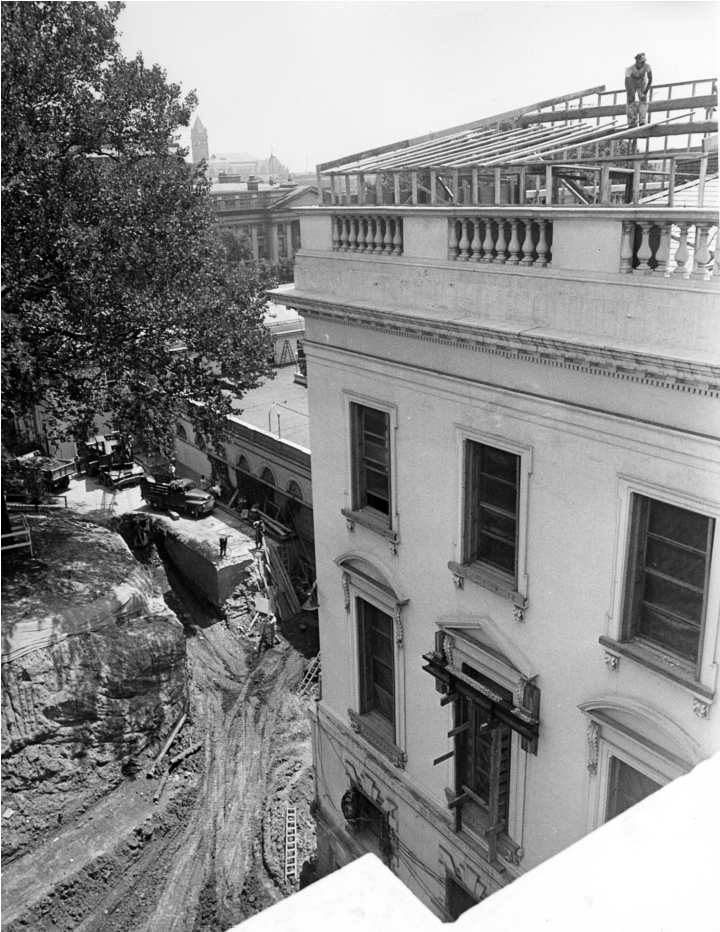


View from northeast corner of the North Portico of White House during renovation



Description

View from northeast corner of the North Portico looking east and showing excavation at the northeast corner of the White House. A temporary wooden protection is being erected over the roof at this corner preparatory to raising it, and other corners, to the height of central part.

Date(s)

July 31, 1950

Accession Number 71-351

8x10 inches (21x26 cm) Black & White

Related Collection [Harry S. Truman Papers](#)

Keywords Building repair and reconstruction Dwellings Historic buildings Presidential residences
Renovation (Architecture)

HST Keywords White House - Miscellaneous - Renovation

Rights Public Domain - This item is in the public domain and can be used freely without further permission.

Note: If you use this image, rights assessment and attribution are your responsibility.

Credit: Abbie Rowe National Park Service Harry S. Truman Library & Museum.

Attention media: Please make note of this item's accession number. Print out this page and retain it for your permissions records before downloading this image file for possible publication. Library staff cannot sign permissions forms or provide additional paperwork. The Library charges no usage fees for downloaded images.