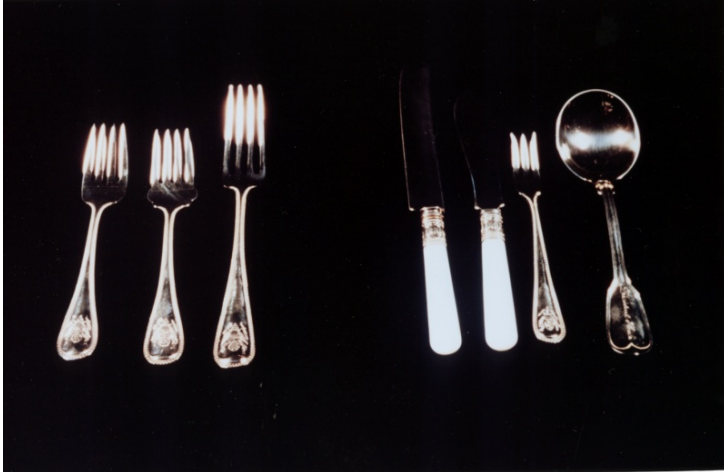


# Color photo of seven pieces of White House silverware



## Description

Color photo of silverware in the pattern selected by the Trumans for the White House china. The matching china is made by Lenox, and marking, on the reverse side of the dinner plate of this service is as follows: X-307. Made in U.S.A. B. Altman and Co. (See also 78-41 through 78-43.) The china, matching crystal, and silverware are in the Museum collection, and the photos are copied from original slides.

## Date(s)

ca.  
1975

**Accession Number** 2003-229

8x10 inches (21x26 cm)    Color

**Keywords** Tableware

**HST Keywords** China - White House

**Rights** Public Domain - This item is in the public domain and can be used freely without further permission.

**Note: If you use this image, rights assessment and attribution are your responsibility.**

**Credit:** Harry S. Truman Library    Harry S. Truman Library & Museum.

Attention media: Please make note of this item's accession number. Print out this page and retain it for your permissions records before downloading this image file for possible publication. Library staff cannot sign permissions forms or provide additional paperwork. The Library charges no usage fees for downloaded images.