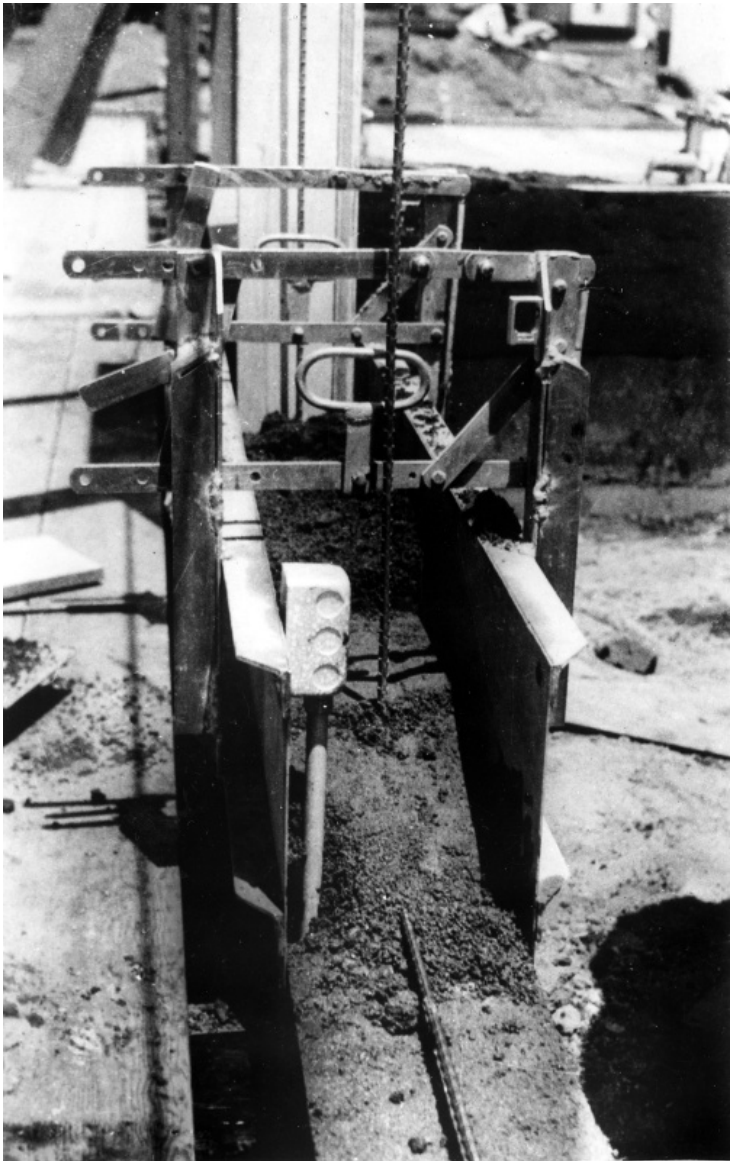


Close up of Ormstead form in use



Description

Close up of Ormstead form in use. This photo was sent to President Harry S. Truman as an example of a construction method to build low-cost housing.

Date(s)

ca.

October 1950

Accession Number 60-204-02

6.5x10 inches Black & White

Related Collection [Harry S. Truman Papers: White House Central Files: Official File](#)

Keywords Construction projects Construction industry

HST Keywords Ormstead form

Rights The Library is unaware of any copyright claims to this item; use at your own risk.

Note: If you use this image, rights assessment and attribution are your responsibility.

Harry S. Truman Library & Museum.

Attention media: Please make note of this item's accession number. Print out this page and retain it for your permissions records before downloading this image file for possible publication. Library staff cannot sign permissions

forms or provide additional paperwork. The Library charges no usage fees for downloaded images.