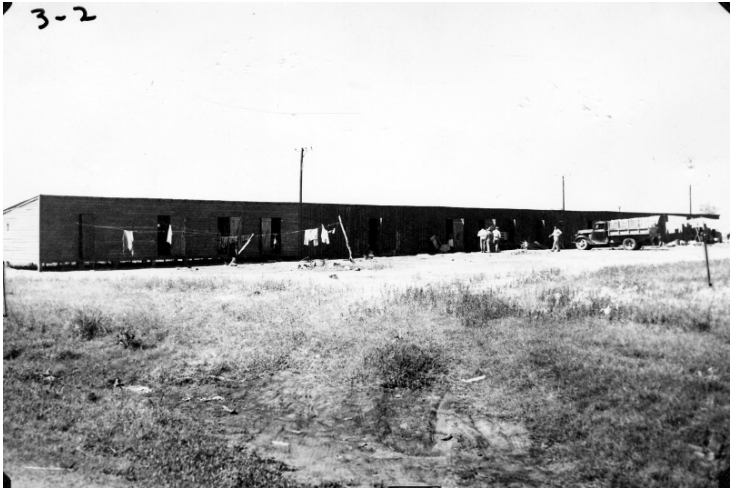


General view of Mathis, Texas labor camp



Description

A view of the labor camp in Mathis, Texas. The camp consists of one-room shacks with no ventilation, lighting, sanitation, or water facilities. Notice there are no shade trees or playgrounds for children. This photo was sent to President Harry S. Truman by Hector Garcia of the League of United Latin American Citizens.

Date(s)

May 1948

Accession Number 60-210-29

5x7 inches (13x18 cm) Black & White

Related Collection [Harry S. Truman Papers: White House Central Files: Official File](#)

Keywords Labor camps

HST Keywords Texas, Mathis

Rights The Library is unaware of any copyright claims to this item; use at your own risk.

Note: If you use this image, rights assessment and attribution are your responsibility.

Harry S. Truman Library & Museum.

Attention media: Please make note of this item's accession number. Print out this page and retain it for your permissions records before downloading this image file for possible publication. Library staff cannot sign permissions forms or provide additional paperwork. The Library charges no usage fees for downloaded images.