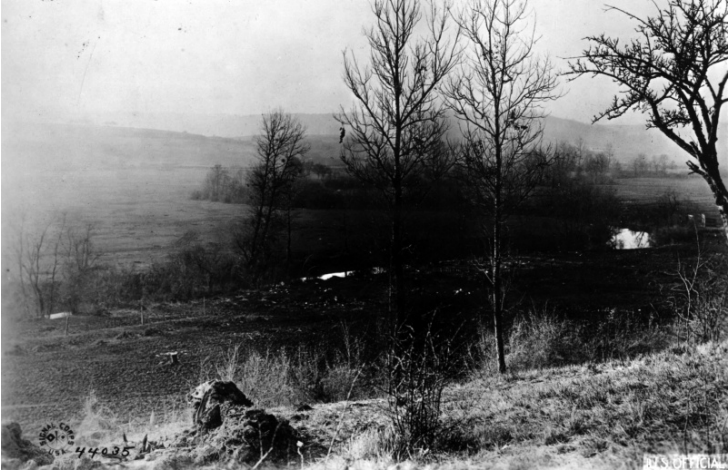


# View Looking Southeast Across Valley of Aire River



## Description

View looking southeast across the valley of the Aire River toward the foothills surrounding the city of Apremont, Ardennes, France. In the far background is the Argonne Forest and the railroad grade across the valley. Ground taken by the 28th and 35th Divisions, Sept. 28 and 29, 1918, during the Argonne-Meuse offensive. From: Lillian R. Craig, Scotland County Public Library, Memphis, Missouri.

## Date(s)

December 1918

**Accession Number** 2002-402

6x8 inches      Black & White

**Keywords** Landscape      World War, 1914-1918

**HST Keywords** World War I - General File - Argonnemeuse, France Offensive; France - World War I - General File - Apremont, Argonnemeuse

**Rights** Public Domain - This item is in the public domain and can be used freely without further permission.

**Note: If you use this image, rights assessment and attribution are your responsibility.**

**Credit:** U.S. Army Signal Corps      Harry S. Truman Library & Museum.

Attention media: Please make note of this item's accession number. Print out this page and retain it for your permissions records before downloading this image file for possible publication. Library staff cannot sign permissions forms or provide additional paperwork. The Library charges no usage fees for downloaded images.