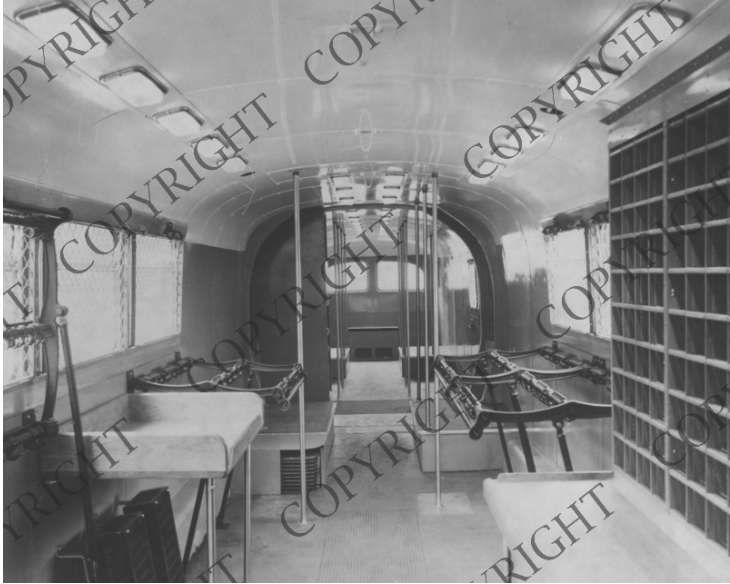


# Interior of the New U. S. Post Office Highway Truck



## Description

Kent, Ohio: Interior of the new U. S. Post Office Highway Truck, which carries 30 percent more mail than apartment type rail post offices.

## Date(s)

May 24, 1949

**Accession Number** 2000-90

8x10 inches (21x26 cm)      Black & White

**Related Collection** [Aiken, Paul C. Papers](#)

**Keywords** Postal service      Trucks

**HST Keywords** Ohio - Kent

**Rights** Copyrighted - This item is copyrighted and cannot be published, reproduced, or otherwise used without the explicit permission of the copyright holder.

**Note: If you use this image, rights assessment and attribution are your responsibility.**

**Credit:** Acme Newspictures      Harry S. Truman Library & Museum.

Attention media: Please make note of this item's accession number. Print out this page and retain it for your permissions records before downloading this image file for possible publication. Library staff cannot sign permissions forms or provide additional paperwork. The Library charges no usage fees for downloaded images.