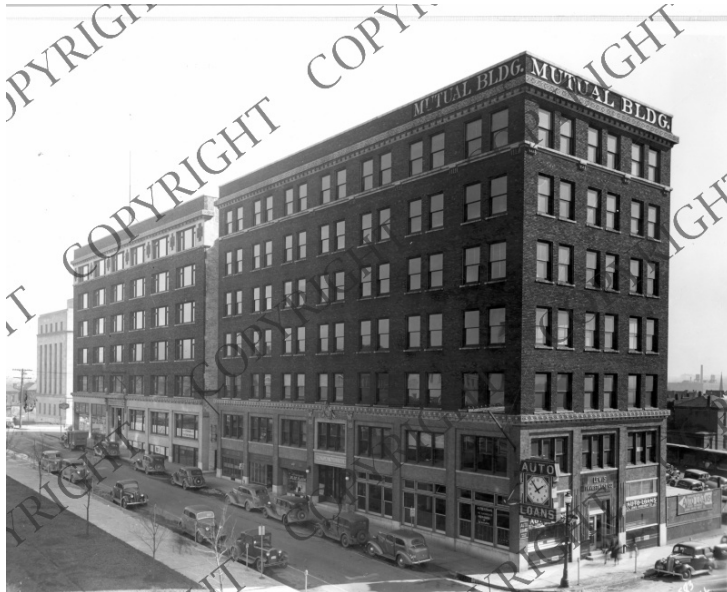


# Mutual Building in Kansas City, Missouri



## Description

Mutual Building on 13th Street, McGee to Locust, from the booklet "Available Office Space in Kansas City, Missouri." This information was provided to Senator Truman by the Kansas City Chamber of Commerce relative to moving bureaus or agencies from Washington, D.C. to other cities. The photograph is accompanied by a statistical sheet and floor plan.

## Date(s)

August 30, 1941

**Accession Number** 2001-181

8x10 inches (21x26 cm)      Black & White

**Related Collection** [Harry S. Truman Papers: Papers as U.S. Senator and Vice President](#)

**Keywords** Cities and towns      Construction projects

**HST Keywords** Missouri - Cities - Kansas City - General - Mutual Building

**Rights** Copyrighted - This item is copyrighted and cannot be published, reproduced, or otherwise used without the explicit permission of the copyright holder.

**Note: If you use this image, rights assessment and attribution are your responsibility.**

**Credit:** Cresswell, Kansas City (Mo.)      Harry S. Truman Library & Museum.

Attention media: Please make note of this item's accession number. Print out this page and retain it for your permissions records before downloading this image file for possible publication. Library staff cannot sign permissions forms or provide additional paperwork. The Library charges no usage fees for downloaded images.