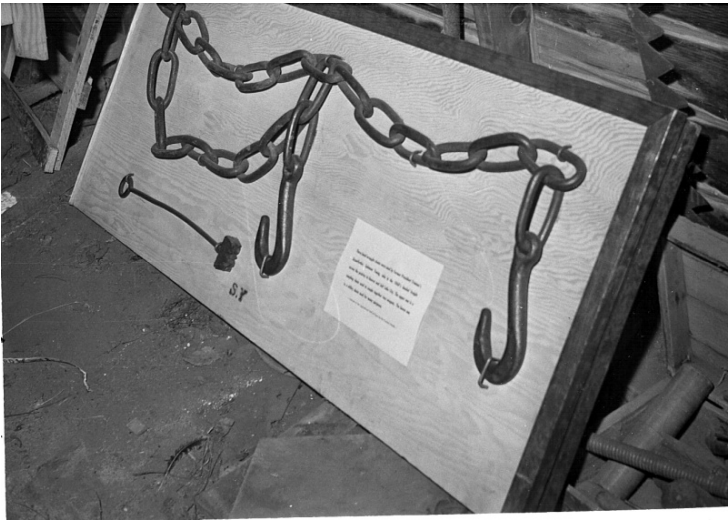


# Solomon Young chains



## Description

These hand-wrought chains, which belonged to Solomon Young, Harry S. Truman's grandfather, hauled freight across the prairies to Denver and Salt Lake City. The upper one is a coupling chain used to couple together two wagons.

## Date(s)

February 16, 1961

**Accession Number** 61-69-01

4x5 inches (10x13 cm)      Black & White

**HST Keywords** Chains; Young, Solomon (reference to)

**Rights** Public Domain - This item is in the public domain and can be used freely without further permission.

**Note: If you use this image, rights assessment and attribution are your responsibility.**

**Credit:** Cecil H. Schrepfer      Harry S. Truman Library      Harry S. Truman Library & Museum.

Attention media: Please make note of this item's accession number. Print out this page and retain it for your permissions records before downloading this image file for possible publication. Library staff cannot sign permissions forms or provide additional paperwork. The Library charges no usage fees for downloaded images.