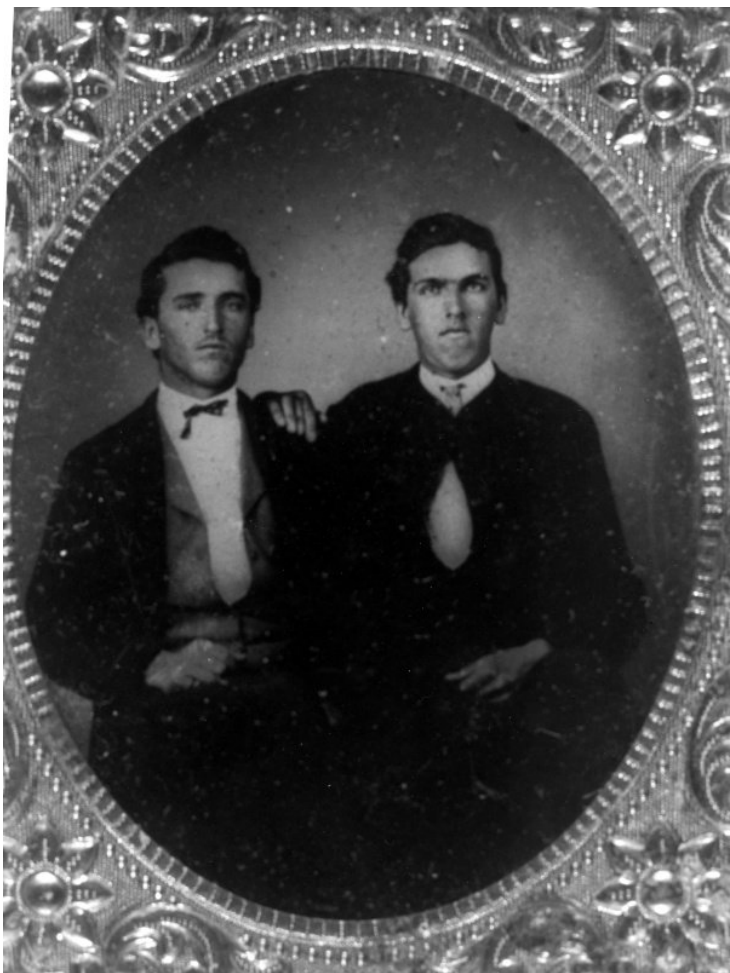


# Joseph Tilford and Morton Scrivener



## Description

Part of a collection of old tintypes and photos of Truman and Noland family ancestors. Joseph Tilford Noland (left) and Morton Scrivener. This is a framed under glass and looks like a tintype.

## Date(s)

ca.  
1865

**Accession Number** 72-3470

7-1/2x9-1/2 inches    Black & White

**Related Collection** [Noland, Mary Ethel Papers](#)

**Keywords** Portraits    Presidential family

**HST Keywords** Truman - Relatives - Noland, Joseph Tilford

**People Pictured** Noland, Joseph Tilford, 1847-1923

**Rights** Public Domain - This item is in the public domain and can be used freely without further permission.

**Note: If you use this image, rights assessment and attribution are your responsibility.**

Harry S. Truman Library & Museum.

Attention media: Please make note of this item's accession number. Print out this page and retain it for your permissions records before downloading this image file for possible publication. Library staff cannot sign permissions forms or provide additional paperwork. The Library charges no usage fees for downloaded images.