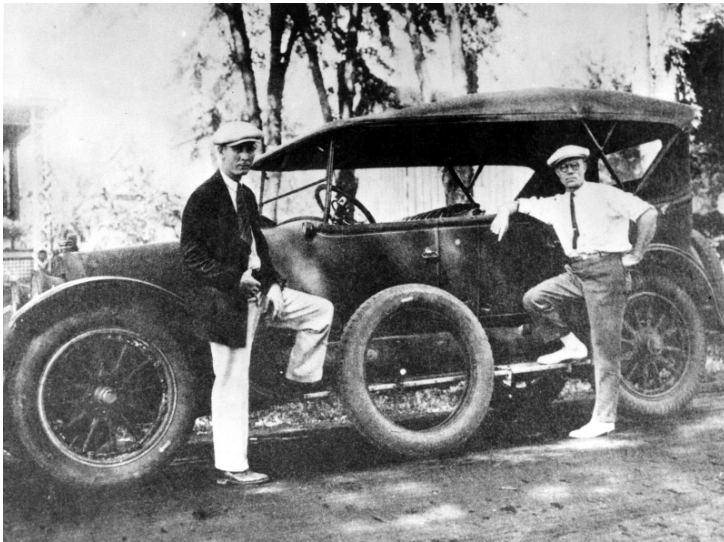


Crown Coach Co



Description

Crown Coach Co. Seven passenger Cadillac touring car, used by Brown Brother Bus Co. One of the first buses used when the Brown Bros. line was started. Unidentified men. From: Mrs. Roger Smith, Grandview, Missouri

Date(s)

Accession Number 62-19

8x10 inches (21x26 cm) Black & White

Keywords Automobiles Men

HST Keywords Automobiles

Rights The Library is unaware of any copyright claims to this item; use at your own risk.

Note: If you use this image, rights assessment and attribution are your responsibility.

Harry S. Truman Library & Museum.

Attention media: Please make note of this item's accession number. Print out this page and retain it for your permissions records before downloading this image file for possible publication. Library staff cannot sign permissions forms or provide additional paperwork. The Library charges no usage fees for downloaded images.