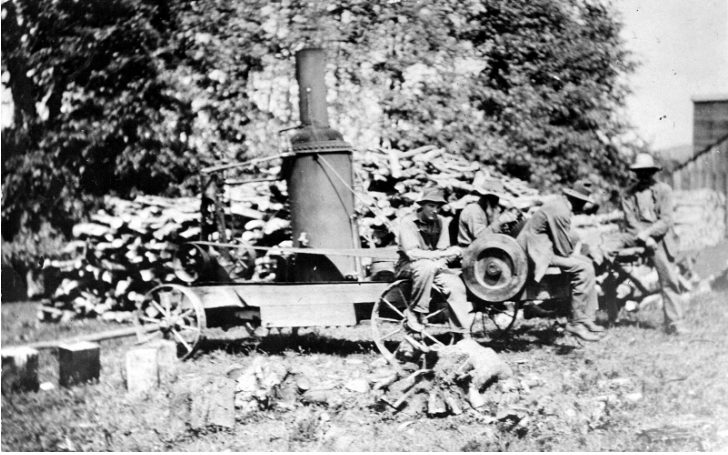


Steam engine



Description

Steam engine. Sawing wood east of Independence in the 1880s with a steam engine. Left to right: Otha Leake; Tom Hudspeth; George Leake; Porter Farris. From: Clyde A. Farris, K.C., MO.

Date(s)

ca.
1885

Accession Number 62-124

5x7 inches (13x18 cm) Black & White

Keywords Men Railroads

Rights Public Domain - This item is in the public domain and can be used freely without further permission.

Note: If you use this image, rights assessment and attribution are your responsibility.

Credit: Clyde A. Farris Harry S. Truman Library & Museum.

Attention media: Please make note of this item's accession number. Print out this page and retain it for your permissions records before downloading this image file for possible publication. Library staff cannot sign permissions forms or provide additional paperwork. The Library charges no usage fees for downloaded images.