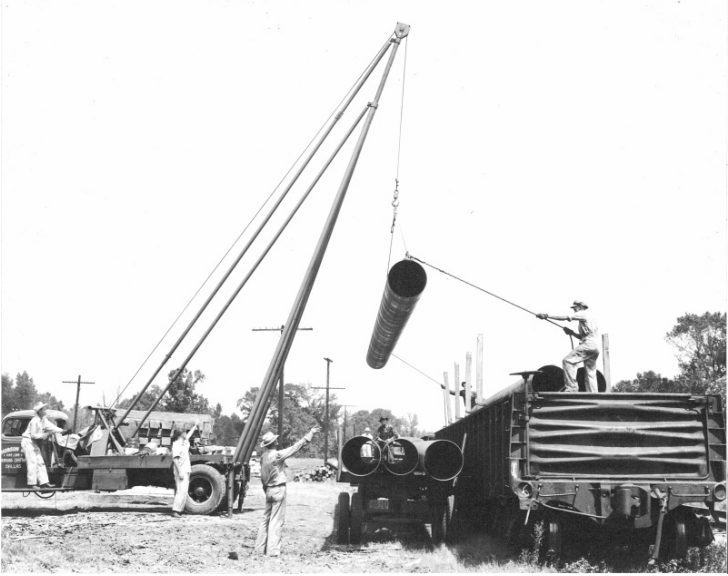


# Section of pipeline being lifted from freight car



## Description

Section of two ton oil pipeline being lifted from the freight car to the trailer truck to be placed in Section Number 3. From the scrapbook War Emergency Pipelines, Inc.: Construction Views - First Section of East Texas-East Coast Pipeline.

## Date(s)

ca.  
1942

**Accession Number** 2008-411

9.25x7.5 inches    Black & White

**Related Collection** [Davies, Ralph K. Papers](#)

**Keywords** Trucks    Oil industries    Pipelines

**Rights** The Library is unaware of any copyright claims to this item; use at your own risk.

**Note: If you use this image, rights assessment and attribution are your responsibility.**

Harry S. Truman Library & Museum.

Attention media: Please make note of this item's accession number. Print out this page and retain it for your permissions records before downloading this image file for possible publication. Library staff cannot sign permissions forms or provide additional paperwork. The Library charges no usage fees for downloaded images.