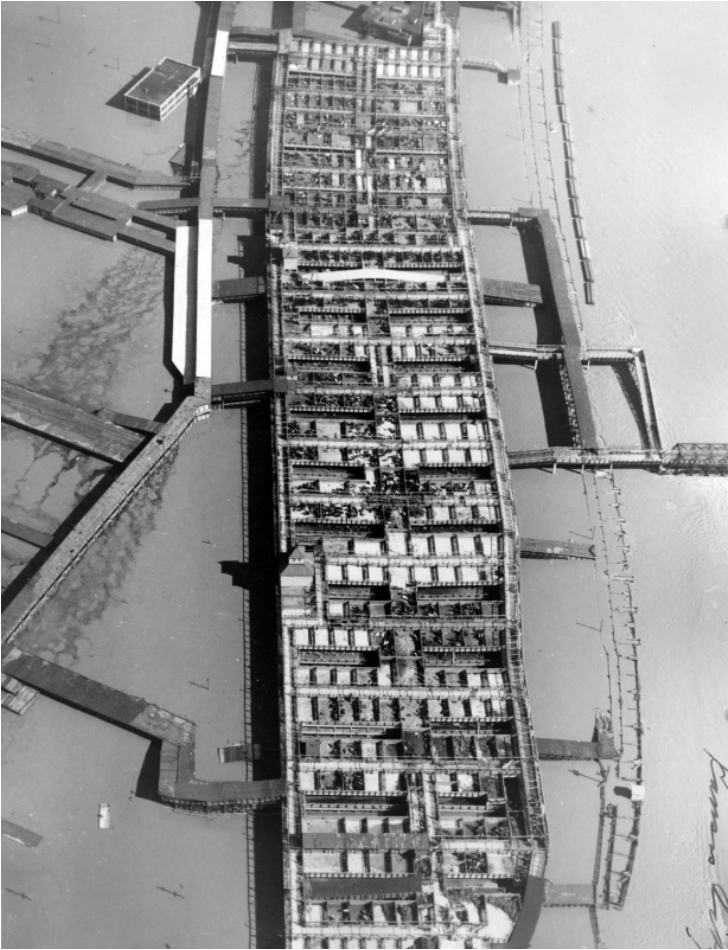


# Aerial view of the Stock Yard pens, Kansas City, Kansas, surrounded by flood waters during the flood of 1951



## Description

Aerial view of the Stock Yard pens in the Central Industrial District, Kansas City, Kansas, with animals therein, surrounded by rising water from the Kansas River during the flood of 1951. From: Folder entitled Missouri-Kansas Flood, 1951.

## Date(s)

July 15, 1951

**Accession Number** 2008-46

8x10 inches (21x26 cm)      Black & White

**Keywords** Floods      Livestock

**HST Keywords** Flood - Kansas - Kansas City - 1951; Kansas - Kansas City - Kansas River - Flood; Stockyards - Kansas City

**Rights** The Library is unaware of any copyright claims to this item; use at your own risk.

**Note: If you use this image, rights assessment and attribution are your responsibility.**

Harry S. Truman Library & Museum.

Attention media: Please make note of this item's accession number. Print out this page and retain it for your permissions records before downloading this image file for possible publication. Library staff cannot sign permissions

forms or provide additional paperwork. The Library charges no usage fees for downloaded images.