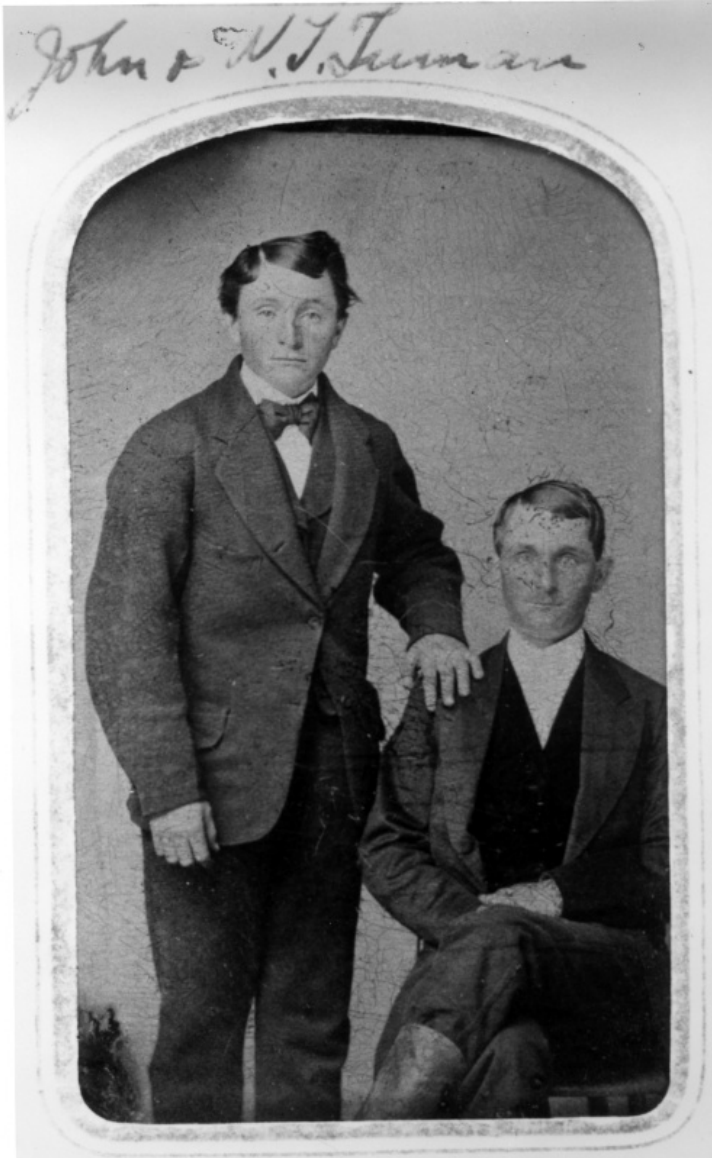


Tintype of John Anderson Truman and William Thomas Truman



Description

Tintype portrait of John Anderson Truman and William Thomas Truman (seated) as young men. John Anderson Truman is the father of Harry S. Truman. John's brother, William Thomas Truman, is the father of Ralph E. Truman. From: Unknown donor, Truman Wing. Found in the right hand drawer of credenza in HST office.

Date(s)

ca.
1870

Accession Number 96-975

6x9.5 inches Black & White

Keywords Portraits Presidential family Presidential personal matters

HST Keywords Truman- Family - Father - Truman, John Anderson; Truman - Relatives - Truman, William Thomas

People Pictured Truman, John Anderson, 1851-1914 Truman, William Thomas, 1847-1930

Rights Public Domain - This item is in the public domain and can be used freely without further permission.

Note: If you use this image, rights assessment and attribution are your responsibility.

Harry S. Truman Library & Museum.

Attention media: Please make note of this item's accession number. Print out this page and retain it for your permissions records before downloading this image file for possible publication. Library staff cannot sign permissions forms or provide additional paperwork. The Library charges no usage fees for downloaded images.