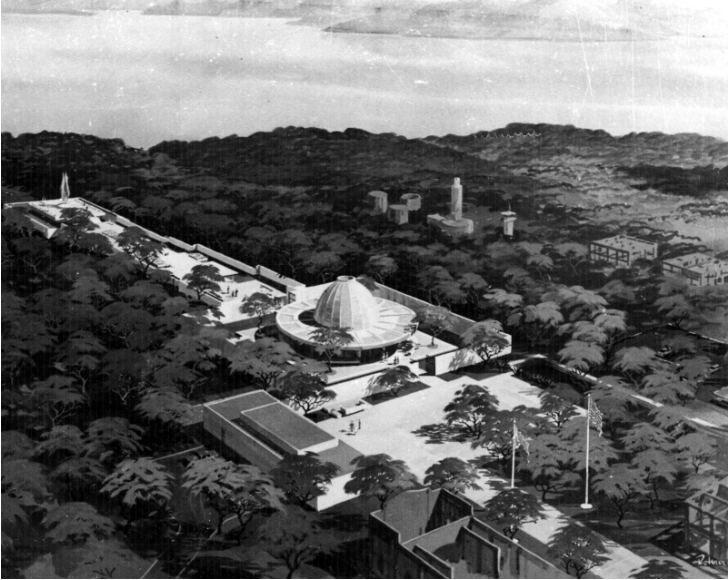


# Architects Perspective Drawing of the Pacific War Memorial



## Description

Architects perspective drawing of the Pacific War Memorial located on the island of Corregidor, Philippines. Shown predominantly at the center is the rotunda with a circular altar directly under the dome's oculus. On the left foreground is the tourist building housing a museum and film projection room. Beyond the rotunda on the left is the monument on a raised platform at the end.

## Date(s)

June 22, 1968

**Accession Number** 2013-3144

8x10 inches (21x26 cm)      Black & White

**Related Collection** [O'Neal, Emmet Papers](#)

**Keywords** Memorials

**HST Keywords** Philippines, Corregidor

**Rights** The Library is unaware of any copyright claims to this item; use at your own risk.

**Note: If you use this image, rights assessment and attribution are your responsibility.**

Harry S. Truman Library & Museum.

Attention media: Please make note of this item's accession number. Print out this page and retain it for your permissions records before downloading this image file for possible publication. Library staff cannot sign permissions forms or provide additional paperwork. The Library charges no usage fees for downloaded images.