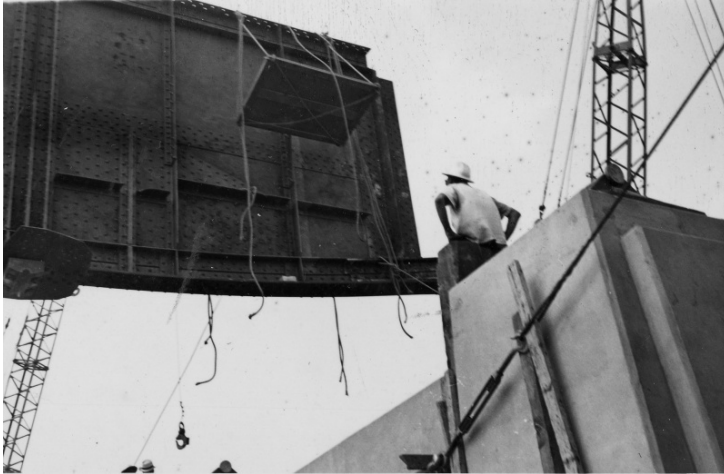


Large Steel Section on the Dong Nai Bridge Construction Site



Description

An unidentified worker is waiting for a large steel section to be lowered into place on the Dong Nai bridge construction site in South Vietnam.

Date(s)

ca.

April 1960

Accession Number 2014-1482

3.5x2.45 inches Black & White

Related Collection [Gardiner, Arthur Z. Papers](#)

Keywords Bridges Construction projects

Rights The Library is unaware of any copyright claims to this item; use at your own risk.

Note: If you use this image, rights assessment and attribution are your responsibility.

Harry S. Truman Library & Museum.

Attention media: Please make note of this item's accession number. Print out this page and retain it for your permissions records before downloading this image file for possible publication. Library staff cannot sign permissions forms or provide additional paperwork. The Library charges no usage fees for downloaded images.