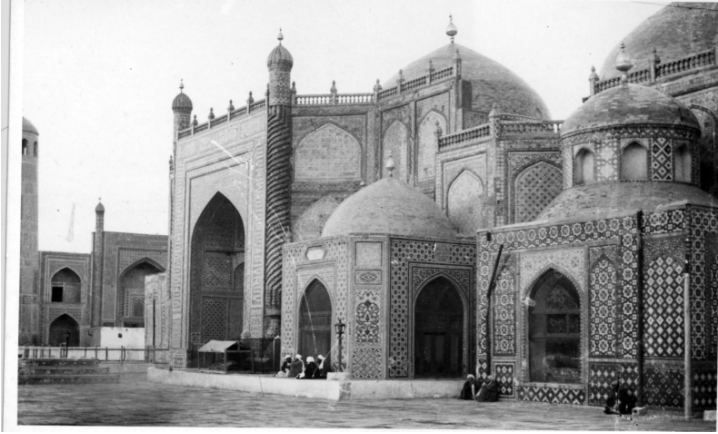


# Mosque in Mazar-e Sharif in Afghanistan



## Description

Exterior view image on a post card identified in hand writing on the back as the Raouza [Raoza] mosque located in Mazar-e or Mazari Sharif in Afghanistan. Also identifies the tomb of Emir Sher Ali Khan in right hand corner.

## Date(s)

**Accession Number** 2008-1448

3.5x5.5     Black & White

**Related Collection** [Thayer, Charles W. Papers](#)

**Keywords** Historic buildings     Islam     Tombs

**HST Keywords** Afghanistan

**Rights** The Library is unaware of any copyright claims to this item; use at your own risk.

**Note: If you use this image, rights assessment and attribution are your responsibility.**

Harry S. Truman Library & Museum.

Attention media: Please make note of this item's accession number. Print out this page and retain it for your permissions records before downloading this image file for possible publication. Library staff cannot sign permissions forms or provide additional paperwork. The Library charges no usage fees for downloaded images.