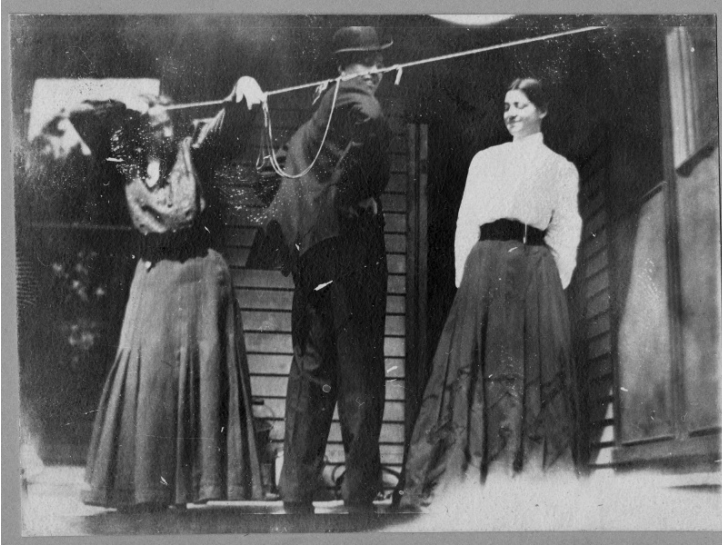


# Tableau on Porch of Wallace Home



## Description

Two young women and a young man pose for a photograph as part of a tableau or play. Bess Wallace is at left, leaning on a clothesline. All others are unidentified. They are on the back porch of the Wallace home at 219 North Delaware Street, Independence, Missouri. This could possibly be connected to the "St. Agnes Guild," in which friends of Bess Wallace put on an outdoor play for children (see "Remembering Delaware Street" by Elizabeth Paxton Forsling). From: Truman home, an album of Wallace family, friends, and vacations.

## Date(s)

ca.  
1900

**Accession Number** 82-59-113

2.4x3.25 inches    Black & White

**Keywords** Men    Women    Drama

**HST Keywords** Truman, Bess - Childhood - Youth; Truman - Homes - Independence

**People Pictured** Truman, Bess Wallace, 1885-1982

**Rights** Public Domain - This item is in the public domain and can be used freely without further permission.

**Note: If you use this image, rights assessment and attribution are your responsibility.**

Harry S. Truman Library & Museum.

Attention media: Please make note of this item's accession number. Print out this page and retain it for your permissions records before downloading this image file for possible publication. Library staff cannot sign permissions forms or provide additional paperwork. The Library charges no usage fees for downloaded images.