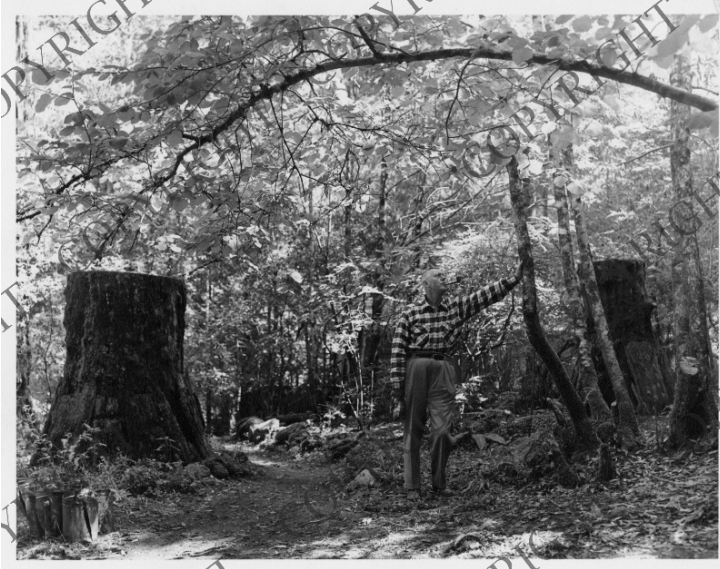


# John R. Steelman Poses for Photograph Near Redwood Remains



## Description

John R. Steelman stands next to a stump of a redwood tree in a wooded area.

## Date(s)

July 27, 1951

**Accession Number** 2014-3693

8x10 inches (21x26 cm)      Black & White

**Related Collection** [Steelman, John R. Papers](#)

**Keywords** Men      Trees      Forests and forestry

**People Pictured** Steelman, John Roy, 1900-1999

**Rights** Copyrighted - This item is copyrighted and cannot be published, reproduced, or otherwise used without the explicit permission of the copyright holder.

**Note: If you use this image, rights assessment and attribution are your responsibility.**

**Credit:** Stornoway Studio      Harry S. Truman Library & Museum.

Attention media: Please make note of this item's accession number. Print out this page and retain it for your permissions records before downloading this image file for possible publication. Library staff cannot sign permissions forms or provide additional paperwork. The Library charges no usage fees for downloaded images.