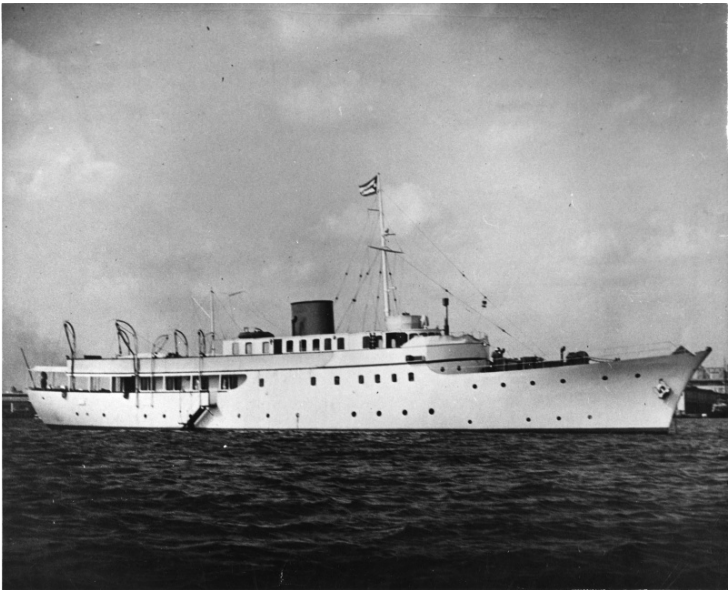


# A Diesel Yacht



## Description

A photograph of the outside of an unidentified yacht. The specifications are as follows: A twin screw diesel yacht with an eighteen men crew and accommodations for fourteen guests. The yacht has two diesel motors with 650 horse power each and a top speed of fourteen knots per hour.

## Date(s)

ca.  
1945

**Accession Number** 63-1285

8x10 inches (21x26 cm)      Black & White

**Related Collection** [Wallgren, Monrad C. Papers](#)

**Keywords** Yachts

**Rights** The Library is unaware of any copyright claims to this item; use at your own risk.

**Note: If you use this image, rights assessment and attribution are your responsibility.**

Harry S. Truman Library & Museum.

Attention media: Please make note of this item's accession number. Print out this page and retain it for your permissions records before downloading this image file for possible publication. Library staff cannot sign permissions forms or provide additional paperwork. The Library charges no usage fees for downloaded images.