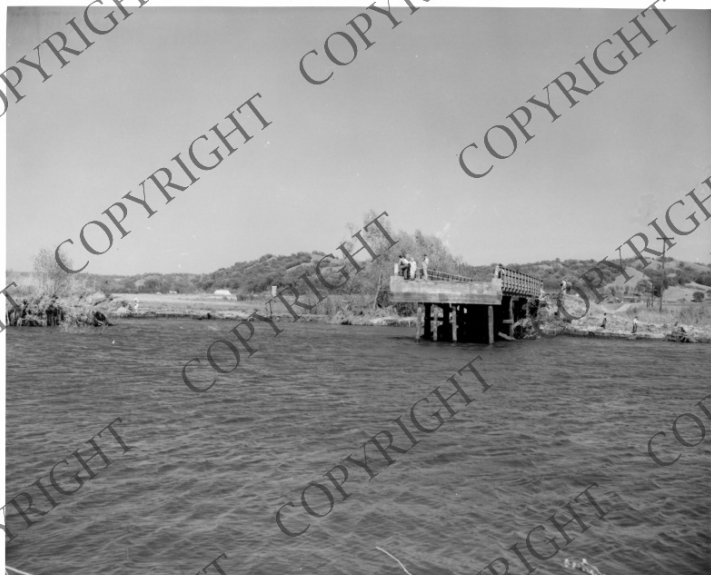


# Highway 2 Near Iowa Bluffs



## Description

A bridge on Highway 2 near Iowa Bluffs was washed out and damaged by flooding of the Missouri River. Men standing on the bridge are unidentified.

## Date(s)

May 1952

**Accession Number** 2015-1863

8x10 inches (21x26 cm)      Black & White

**Related Collection** [Records of Temporary Committees, Commissions and Boards: Records of the Missouri Basin Survey Commission \(Record Group 220\)](#)

**Keywords** Bridges      Roads      Flood damage

**Rights** Copyrighted - This item is copyrighted and cannot be published, reproduced, or otherwise used without the explicit permission of the copyright holder.

**Note: If you use this image, rights assessment and attribution are your responsibility.**

**Credit:** Claude Sheldon      Harry S. Truman Library & Museum.

Attention media: Please make note of this item's accession number. Print out this page and retain it for your permissions records before downloading this image file for possible publication. Library staff cannot sign permissions forms or provide additional paperwork. The Library charges no usage fees for downloaded images.