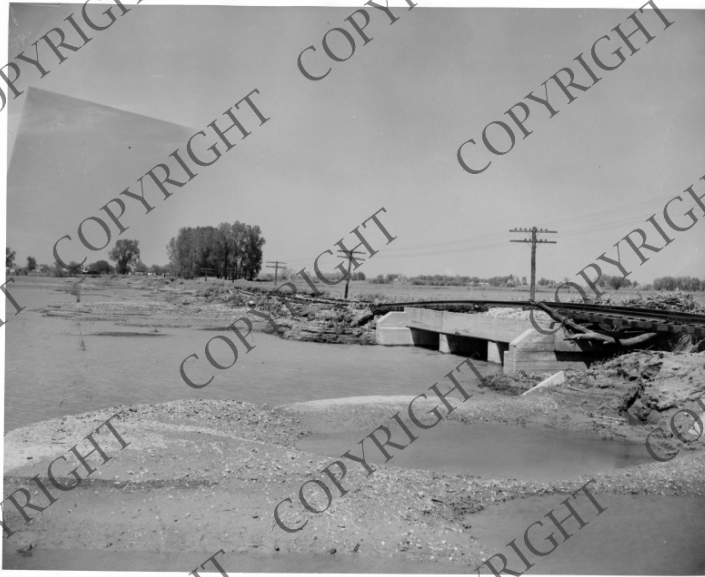


Railroad Tracks Damaged by Flooding



Description

Part of the railroad tracks of the Chicago, Burling and Quincy Railroad tracks have washed out, washing gravel and sand onto Quentin Parkinson's land. His land is near the Missouri River, along the Iowa-Nebraska state line.

Date(s)

May 1952

Accession Number 2015-1860

8x10 inches (21x26 cm) Black & White

Related Collection [Records of Temporary Committees, Commissions and Boards: Records of the Missouri Basin Survey Commission \(Record Group 220\)](#)

Keywords Farms Railroads Flood damage

Rights Copyrighted - This item is copyrighted and cannot be published, reproduced, or otherwise used without the explicit permission of the copyright holder.

Note: If you use this image, rights assessment and attribution are your responsibility.

Credit: Claude Sheldon Harry S. Truman Library & Museum.

Attention media: Please make note of this item's accession number. Print out this page and retain it for your permissions records before downloading this image file for possible publication. Library staff cannot sign permissions forms or provide additional paperwork. The Library charges no usage fees for downloaded images.