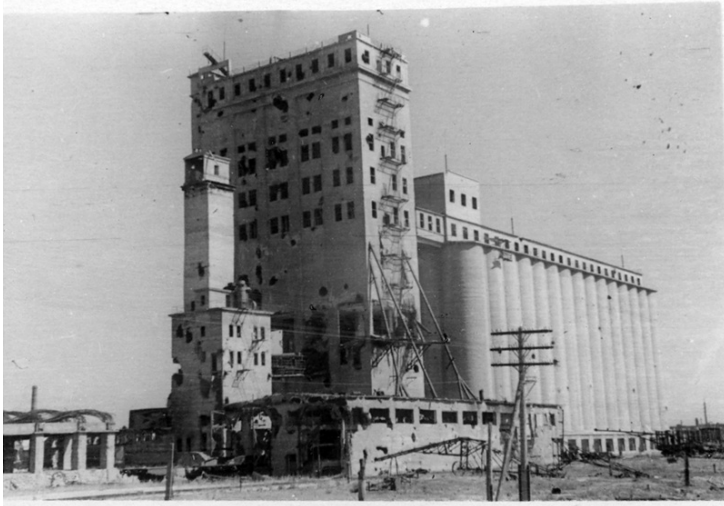


Grain Elevator in Stalingrad



Description

This grain elevator in Stalingrad has sustained some damage, but is still standing after German bombing. This snapshot was retrieved from German prisoners of war. This series includes photos 2009-2671 to 2009-2713 and 2009-2735, 2009-2736.

Date(s)

ca.

1942

Accession Number

2009-2701

3 x 2 inches Black & White

Related Collection [Locke, Edwin A., Jr. Papers](#)

Keywords Buildings World War, 1939-1945 War damage

HST Keywords Russia - Stalingrad

Rights The Library is unaware of any copyright claims to this item; use at your own risk.

Note: If you use this image, rights assessment and attribution are your responsibility.

Harry S. Truman Library & Museum.

Attention media: Please make note of this item's accession number. Print out this page and retain it for your permissions records before downloading this image file for possible publication. Library staff cannot sign permissions forms or provide additional paperwork. The Library charges no usage fees for downloaded images.