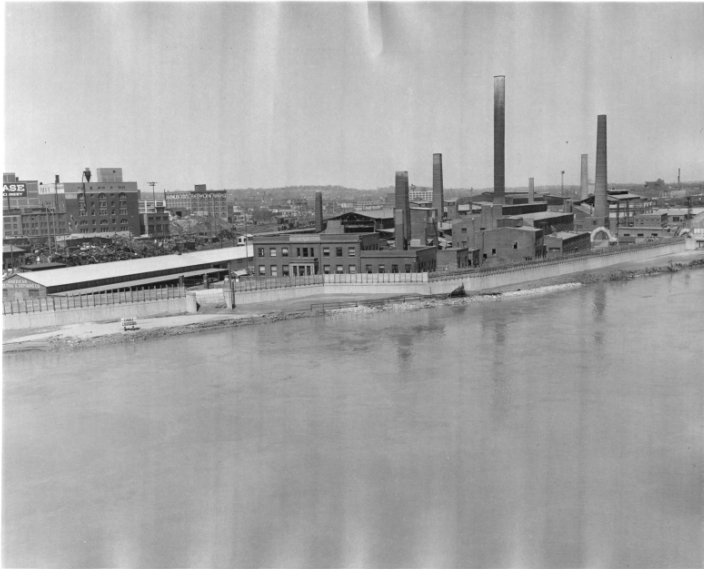


# Water Nears Top of Levee



## Description

Flood water from the Missouri River reaches near the top of a levee in Omaha, Nebraska. Behind the levee is the American Smelting and Refining Company building, well below the present water level.

## Date(s)

April 16, 1952

**Accession Number** 2015-2066

8x10 inches (21x26 cm)      Black & White

**Keywords** Floods      Rivers      Flood damage      Refineries      Industries

**Rights** Public Domain - This item is in the public domain and can be used freely without further permission.

**Note: If you use this image, rights assessment and attribution are your responsibility.**

**Credit:** John S. Savage      Omaha World-Herald      Harry S. Truman Library & Museum.

Attention media: Please make note of this item's accession number. Print out this page and retain it for your permissions records before downloading this image file for possible publication. Library staff cannot sign permissions forms or provide additional paperwork. The Library charges no usage fees for downloaded images.