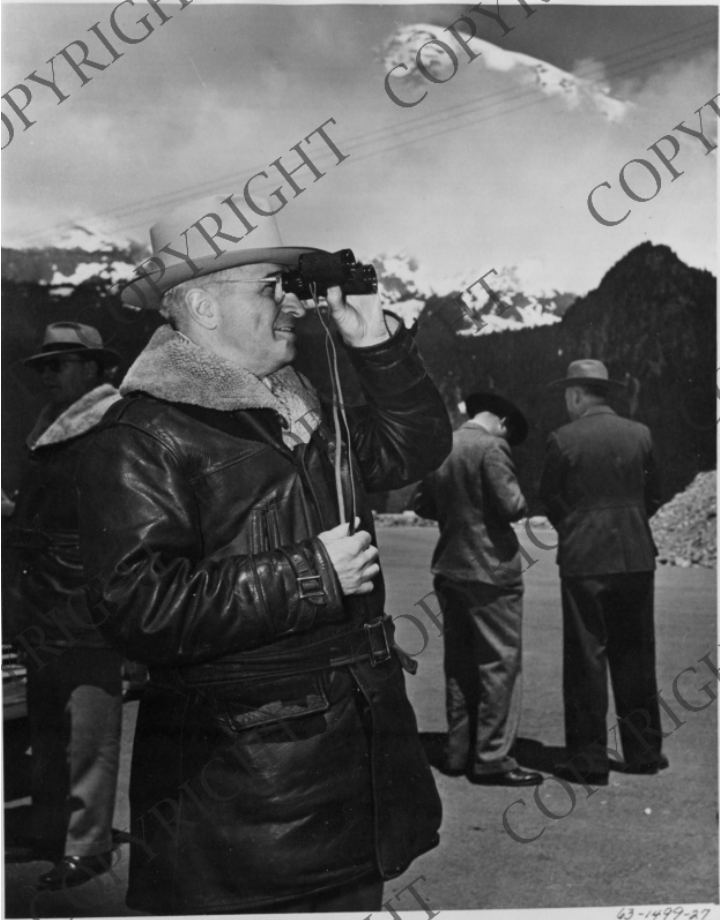


President Harry S. Truman in Washington State



Description

President Harry S. Truman view the scenery in the mountains of Washington State through a pair of binoculars. All other men in the background are unidentified. This photograph is from the album "Mr. President, His Family and Friends."

Date(s)

June 1945

Accession Number 63-1499-27

8x10 inches (21x26 cm) Black & White

Keywords Mountains Presidential trips Presidents

HST Keywords Truman - Trips - West Coast - June 1945

People Pictured Truman, Harry S., 1884-1972

Rights Copyrighted - This item is copyrighted and cannot be published, reproduced, or otherwise used without the explicit permission of the copyright holder.

Note: If you use this image, rights assessment and attribution are your responsibility.

Credit: Life Magazine Harry S. Truman Library & Museum.

Attention media: Please make note of this item's accession number. Print out this page and retain it for your permissions records before downloading this image file for possible publication. Library staff cannot sign permissions forms or provide additional paperwork. The Library charges no usage fees for downloaded images.