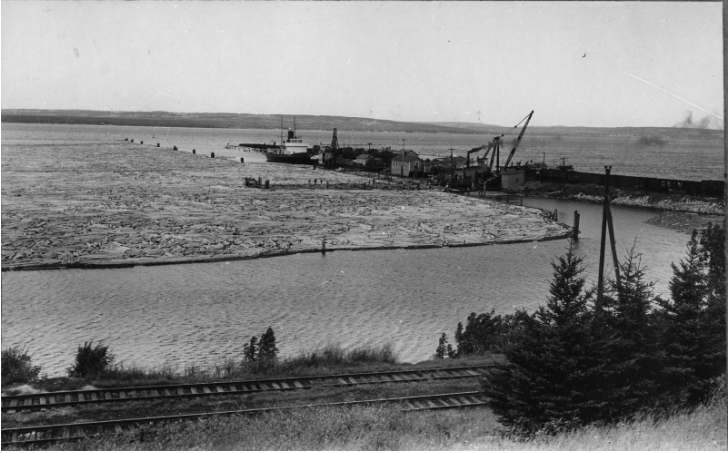


Pulpwood Floating in Lake Superior at Chequamegon National Forest



Accession Number 2009-3080-12

Description

Pulpwood floating in Lake Superior at Chequamegon National Forest in northern Wisconsin. A rig and processing equipment are on the right, while a set of railroad tracks are seen in the foreground. Photos 2009-3080-01 through 2009-3080-107 were originally mounted in a leather bound binder with the gold embossed title, Picture Memories of Region Nine. Region nine, based in Milwaukee, Wisconsin covered twenty states in the Eastern Region: Maine, Illinois, Ohio, Michigan, Wisconsin, Minnesota, Iowa, Missouri, Indiana, Pennsylvania, West Virginia, Maryland, New York, Connecticut, Rhode Island, Massachusetts, Vermont, New Hampshire, Delaware, and New Jersey. Mr. Lyle Watts was Regional Forester of Region Nine 1936-1943.

Date(s)

4.5 x 7 inches Black & White

Related Collection [Watts, Lyle Papers](#)

Keywords Lakes Forests and forestry Logging

HST Keywords Wisconsin

Rights The Library is unaware of any copyright claims to this item; use at your own risk.

Note: If you use this image, rights assessment and attribution are your responsibility.

Harry S. Truman Library & Museum.

Attention media: Please make note of this item's accession number. Print out this page and retain it for your permissions records before downloading this image file for possible publication. Library staff cannot sign permissions forms or provide additional paperwork. The Library charges no usage fees for downloaded images.