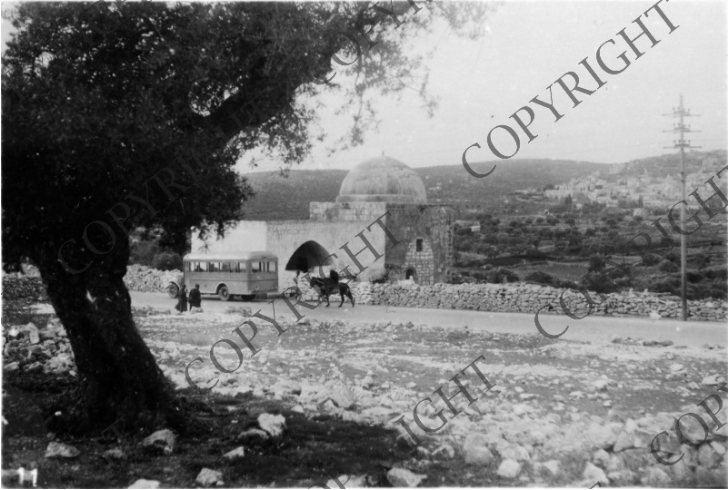


The Tomb of Rachel On the Road from Bethlehem to Jerusalem



Description

This is a commercial photograph of the tomb of Rachel, the wife of Jacob. E. Clifton Daniel, Jr. wrote on the back of the photograph: "This is the tomb of Rachel on the road from Bethlehem to Jerusalem. It is built like the old Arab tombs." Part of a group of photographs originally sent by E. Clifton Daniel, Jr. to his mother.

Date(s)

ca.
1950

Accession Number 2016-814

3.2 x 2.1 inches Black & White

Related Collection [Daniel, Margaret Truman and E. Clifton Daniel Papers](#)

Rights Copyrighted - This item is copyrighted and cannot be published, reproduced, or otherwise used without the explicit permission of the copyright holder.

Note: If you use this image, rights assessment and attribution are your responsibility.

Credit: Palphot Harry S. Truman Library & Museum.

Attention media: Please make note of this item's accession number. Print out this page and retain it for your permissions records before downloading this image file for possible publication. Library staff cannot sign permissions forms or provide additional paperwork. The Library charges no usage fees for downloaded images.