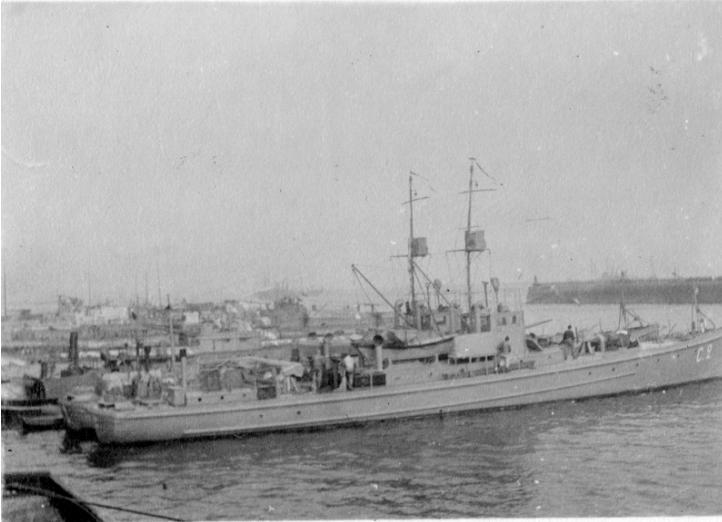


A World War I Battleship In Port



Description

This is a photograph of a World War I battleship docked in an unidentified port, somewhere in France. The photograph is part of a collection belonging to Harry S. Truman from the time he spent in France during World War I.

Date(s)

ca.
1918

Accession Number 2016-1002

2.9 x 2.1 inches Black & White

Related Collection [Daniel, Margaret Truman and E. Clifton Daniel Papers](#)

Keywords Ships World War, 1914-1918

Rights Public Domain - This item is in the public domain and can be used freely without further permission.

Note: If you use this image, rights assessment and attribution are your responsibility.

Harry S. Truman Library & Museum.

Attention media: Please make note of this item's accession number. Print out this page and retain it for your permissions records before downloading this image file for possible publication. Library staff cannot sign permissions forms or provide additional paperwork. The Library charges no usage fees for downloaded images.