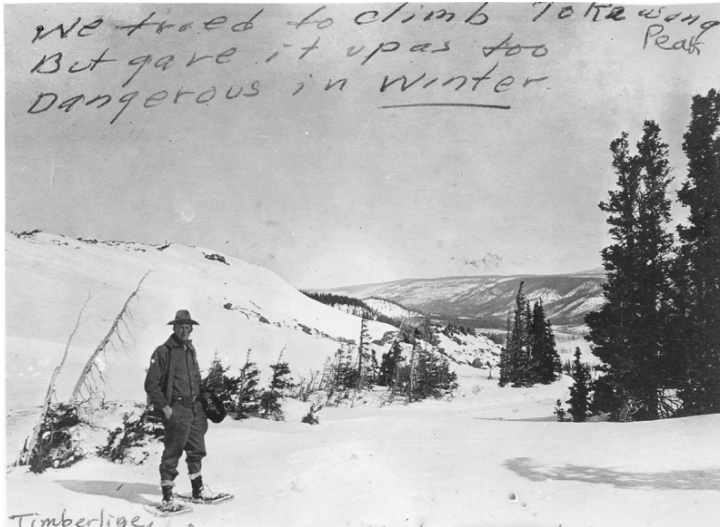


# Forester Lyle F. Watts Stands at the Timberline on Tokewanna Peak



## Description

Forester Lyle F. Watts stands at the Timberline on Tokewanna Peak in the Wasatch National Forest in Utah. He and others tried to climb to the summit, but abandoned their plans when they saw it was too dangerous in winter.

## Date(s)

1914

**Accession Number** 2009-3298

3 x 4 inches      Black & White

**Related Collection** [Watts, Lyle Papers](#)

**Keywords** Snow      Forests and forestry

**People Pictured** Watts, Lyle F. (Lyle Ford), 1890-

**Rights** The Library is unaware of any copyright claims to this item; use at your own risk.

**Note: If you use this image, rights assessment and attribution are your responsibility.**

Harry S. Truman Library & Museum.

Attention media: Please make note of this item's accession number. Print out this page and retain it for your permissions records before downloading this image file for possible publication. Library staff cannot sign permissions forms or provide additional paperwork. The Library charges no usage fees for downloaded images.