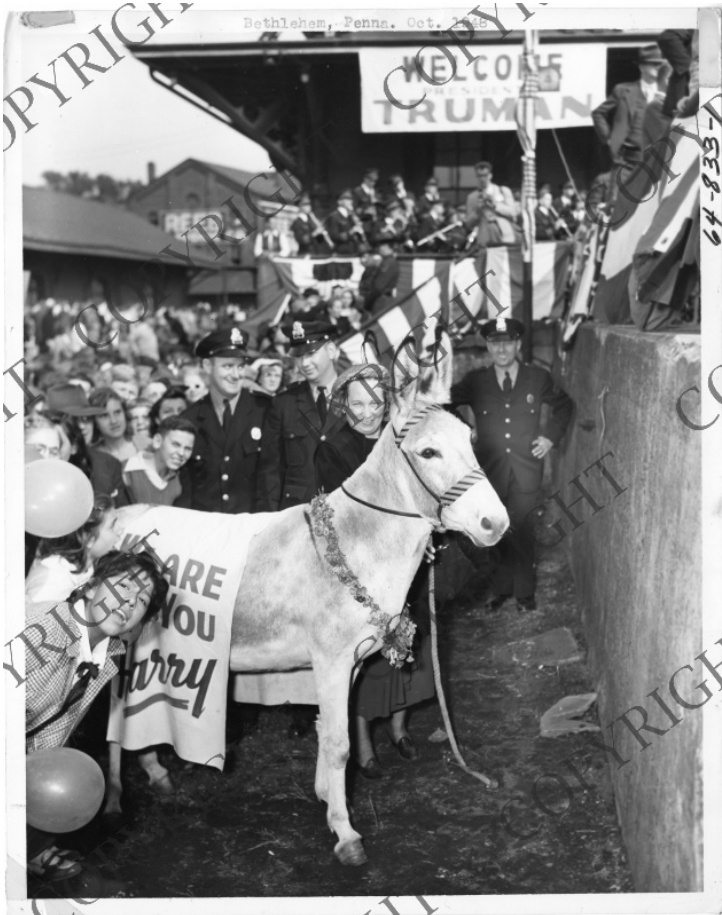


Supporters at President Truman's Campaign Stop in Bethlehem, Pennsylvania



Description

A woman stands with a large mule in front of a large crowd in Bethlehem, Pennsylvania, turn out to show their support for President Harry S. Truman at a campaign stop. All are unidentified.

Date(s)

October 7, 1948

Accession Number 64-833-01

8x10 inches (21x26 cm) Black & White

Keywords Mules Presidential campaign, 1948 Presidential campaign trips

Rights Copyrighted - This item is copyrighted and cannot be published, reproduced, or otherwise used without the explicit permission of the copyright holder.

Note: If you use this image, rights assessment and attribution are your responsibility.

Credit: Andre M. Stofko Harry S. Truman Library & Museum.

Attention media: Please make note of this item's accession number. Print out this page and retain it for your permissions records before downloading this image file for possible publication. Library staff cannot sign permissions forms or provide additional paperwork. The Library charges no usage fees for downloaded images.