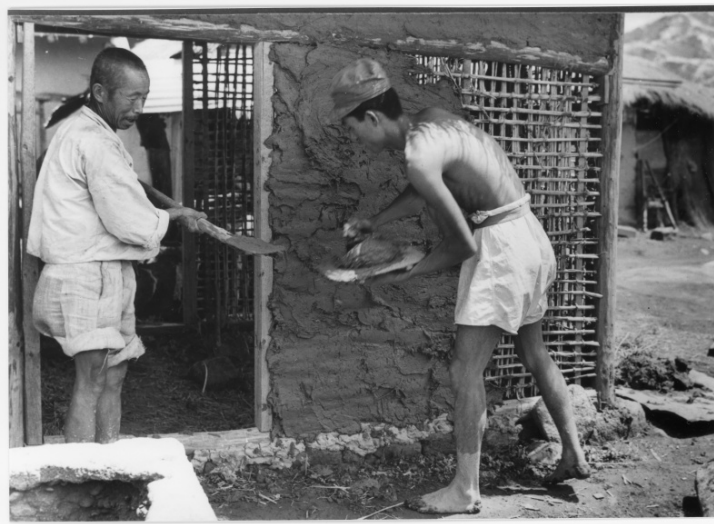


Applying Clay to Wall of House



Description

Two unidentified men are applying clay to the walls of the building in Korea. From: Gene Putnam

Date(s)

ca.

1951

Accession Number 2017-227

5x7 inches (13x18 cm) Black & White

Keywords Buildings Korean War, 1950-1953

Rights Public Domain - This item is in the public domain and can be used freely without further permission.

Note: If you use this image, rights assessment and attribution are your responsibility.

Credit: Gene Putnam Harry S. Truman Library & Museum.

Attention media: Please make note of this item's accession number. Print out this page and retain it for your permissions records before downloading this image file for possible publication. Library staff cannot sign permissions forms or provide additional paperwork. The Library charges no usage fees for downloaded images.