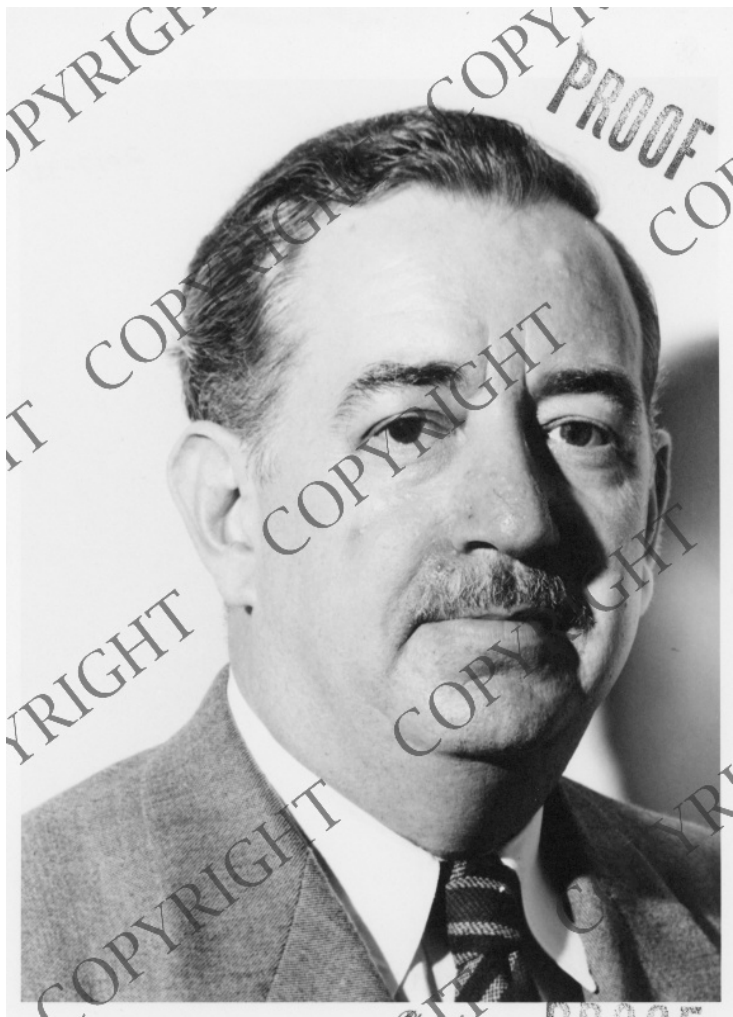


Portrait of John J. Lennon,



Description

This is a proof of a portrait of John J. Lennon, Director of the Philadelphia Office of the United States Census Bureau.

Date(s)

October 11, 1951

Accession Number 2017-331

8x10 inches (21x26 cm) Black & White

Related Collection [Peel, Roy V. Papers](#)

Keywords Portraits

Rights Copyrighted - This item is copyrighted and cannot be published, reproduced, or otherwise used without the explicit permission of the copyright holder.

Note: If you use this image, rights assessment and attribution are your responsibility.

Credit: Joseph D. Cochrane Harry S. Truman Library & Museum.

Attention media: Please make note of this item's accession number. Print out this page and retain it for your permissions records before downloading this image file for possible publication. Library staff cannot sign permissions forms or provide additional paperwork. The Library charges no usage fees for downloaded images.