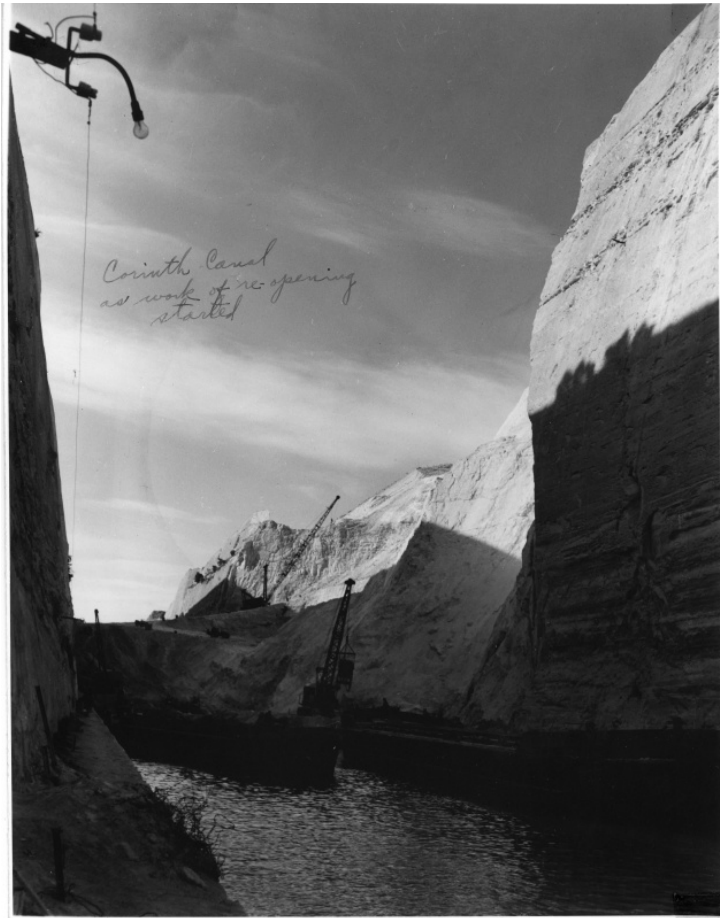


# Corinth Canal



## Description

This is a picture of the Corinth Canal as work of the reopening starting. As work begins, a dredge and dragline are on the water. This project was funded by the American Mission for Aid to Greece.

## Date(s)

ca.  
1948

**Accession Number** 64-1113

9.5x7.5 inches      Black & White

**Related Collection** [Griswold, Dwight P. Papers](#)

**Keywords** Canals

**Rights** The Library is unaware of any copyright claims to this item; use at your own risk.

**Note: If you use this image, rights assessment and attribution are your responsibility.**

Harry S. Truman Library & Museum.

Attention media: Please make note of this item's accession number. Print out this page and retain it for your permissions records before downloading this image file for possible publication. Library staff cannot sign permissions forms or provide additional paperwork. The Library charges no usage fees for downloaded images.