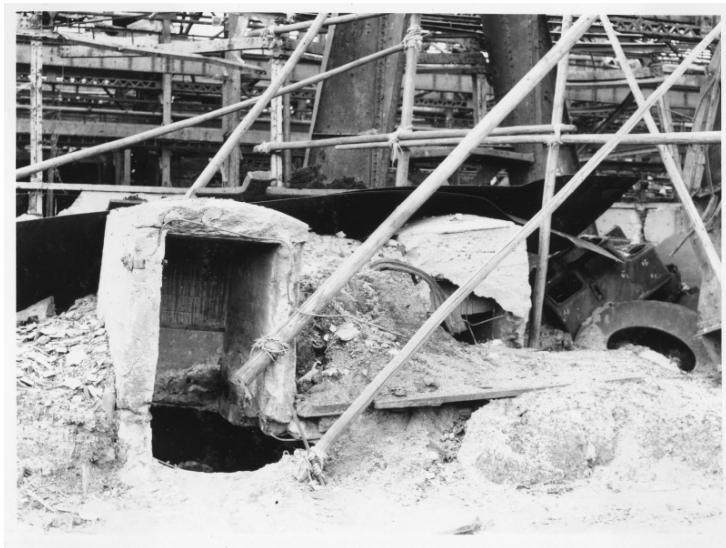


# Damaged Industrial Building in Japan



## Description

This is a photo showing damage to an industrial building in Tokyo, Nagasaki, Kobe, Osaka, or Nagoya, Japan. An entrance to a bomb shelter remains standing. Wooden poles have been lashed together with rope possibly to gain access to what remains. From Basil Rice.

## Date(s)

November 1945

**Accession Number** 2018-85

4x5 inches (10x13 cm)      Black & White

**Keywords** War damage

**Rights** The Library is unaware of any copyright claims to this item; use at your own risk.

**Note: If you use this image, rights assessment and attribution are your responsibility.**

Harry S. Truman Library & Museum.

Attention media: Please make note of this item's accession number. Print out this page and retain it for your permissions records before downloading this image file for possible publication. Library staff cannot sign permissions forms or provide additional paperwork. The Library charges no usage fees for downloaded images.