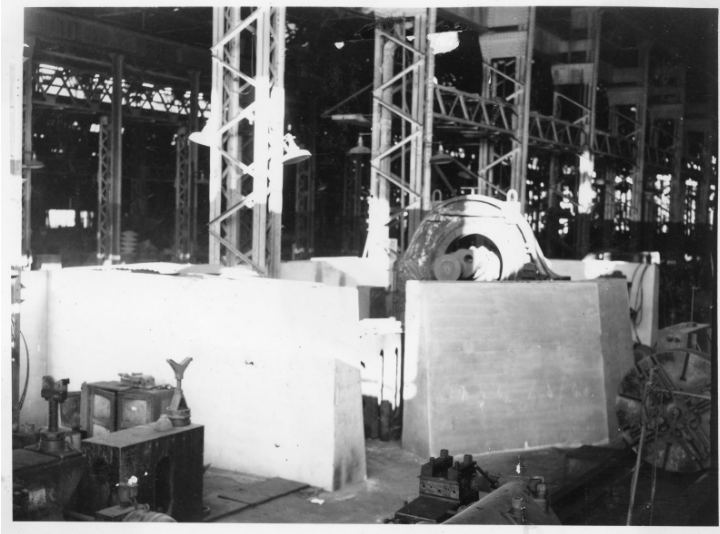


Inside an Industrial Building in Nagasaki, Japan



Description

This is a photograph of the inside an industrial building in Nagasaki, possibly the Mitsubishi plant. Everything except metal or concrete has been burned completely. From Basil Rice.

Date(s)

November 1945

Accession Number 2018-91

4x5 inches (10x13 cm) Black & White

Rights The Library is unaware of any copyright claims to this item; use at your own risk.

Note: If you use this image, rights assessment and attribution are your responsibility.

Harry S. Truman Library & Museum.

Attention media: Please make note of this item's accession number. Print out this page and retain it for your permissions records before downloading this image file for possible publication. Library staff cannot sign permissions forms or provide additional paperwork. The Library charges no usage fees for downloaded images.