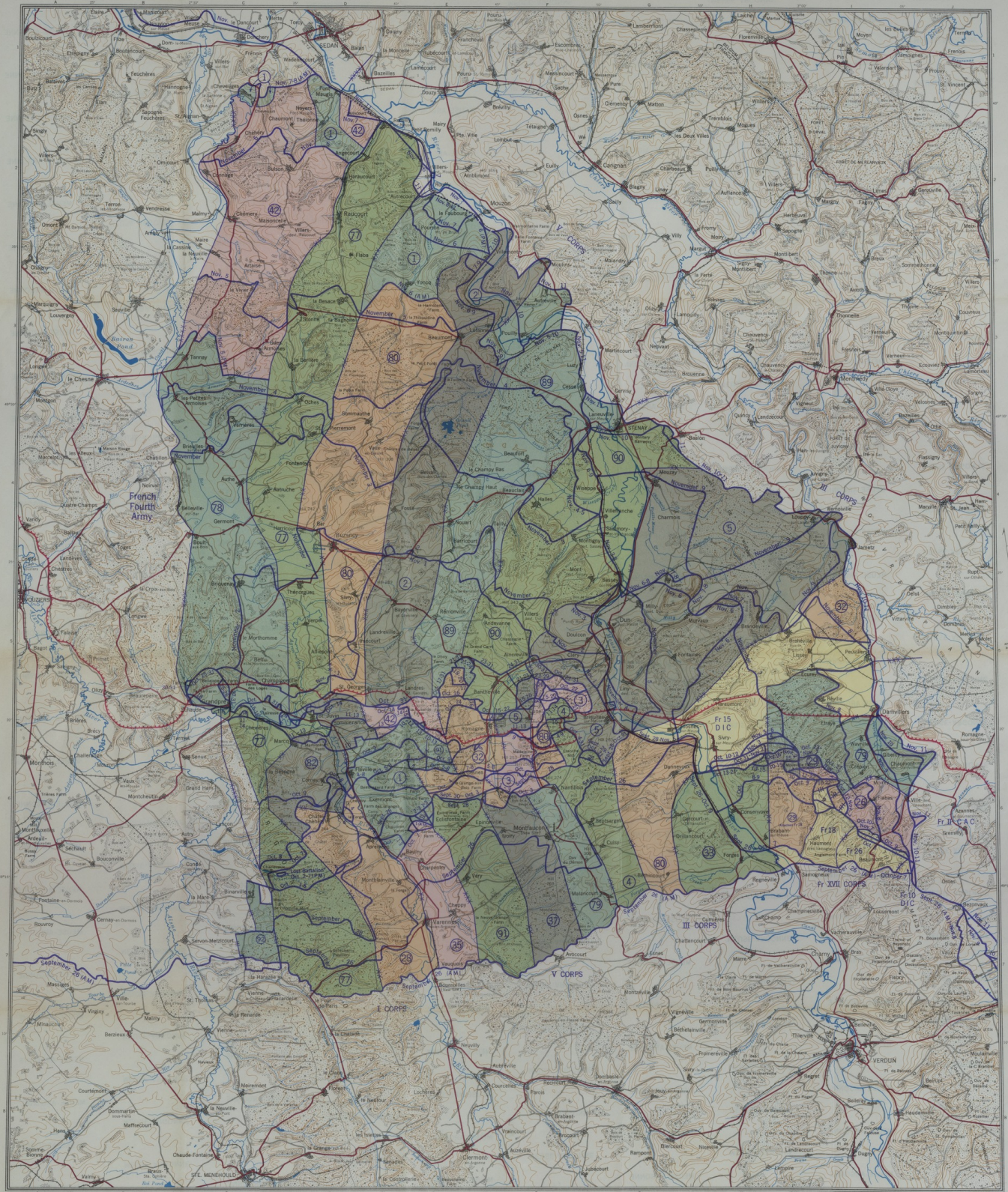


THE MEUSE-ARGONNE OFFENSIVE OF THE AMERICAN FIRST ARMY, SEPTEMBER 26-NOVEMBER 11, 1918



Compiled by the American Battle Monuments Commission, 1927. Revised 1936

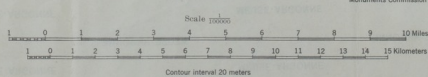
Ground gained by American divisions shown by large circled numerals and colored areas.
Small circled numerals indicate part of American division which fought attached to another division.
Only units larger than a regiment indicated.
Ground gained by French divisions attached to First Army shown by numerals and yellow areas.
Corps locations at the armistice are shown in front of the November 11 line.

Front line
Additional line held by 2d Div. Nov. 7-11
Additional line held by 32d Div. Nov. 9-11
Additional line held by 77th Div. Nov. 12-11
Hindenburg Line
Regimental boundary
Brigade boundary
Division boundary
Corps boundary
Army boundary

Main road
Secondary road
Trail
Standard-gauge railroad
Fortification
Ruins
Church
Meuse-Argonne American Cemetery

All front lines are as of midnight for dates shown unless otherwise noted. Thus September 26 on a line indicates the line held at midnight September 26/27. The dates September 26-27 on a line indicate that the line was located at the same place at midnight of both September 26 and September 27.
Boundaries, except where units gained ground outside their prescribed areas of action, are those given in field orders.
Lines include the results of research of the American Battle Monuments Commission to January 1, 1937.

Bois-Wood
Cote-Hill
Fertile-Forest
Fertile-Forest
Ouv-Redoubt
DIC-Colonial infantry division
CAC-Colonial corps
Fr-French
Meuse-Argonne American Memorial



Accession Number M1976

Description

An American map titled "The Meuse-Argonne Offensive of the American First Army, September 26-November 11, 1918." The map details the movement of front lines, the boundaries held by American and French forces, and the location of American and French divisions. Also noted is the Hindenburg Line, transportation routes, fortifications, ruins, churches, the location of an American cemetery near Romagne-sous-Montfaucon, and an American memorial near Montfaucon. There is a pencil annotation near Fort de Tavannes, west of Eix and northeast of Verdun.

Date(s)

ca.

1937

Cartographer American Battle Monuments Commission. Engineer Reproduction Plant, U.S. Army, Fort Humphreys, D.C.

Keywords [World War, 1914-1918](#)

Photo Color Color

Physical Size 32 1/2 X 25 inches

Related Collection (Plain)

Thirty-Fifth Division Association Records

Restrictions Unrestricted

Scale 1:100,000

TIF Identifier M1976.tif

Rights

This item is in the public domain and can be used freely without further permission.

Note: If you use this image, rights assessment and attribution are your responsibility.

Credit: American Battle Monuments Commission. Engineer Reproduction Plant, U.S. Army, Fort Humphreys, D.C.

Courtesy Harry S. Truman Library & Museum, Independence, Missouri.

Attention media: Please make note of this item's map number. Print out this page and retain it for your permissions records before downloading this image file for possible publication. Library staff cannot sign permissions forms or provide additional paperwork. The Library charges no usage fees for downloaded images. Fees are charged for higher resolution scans.