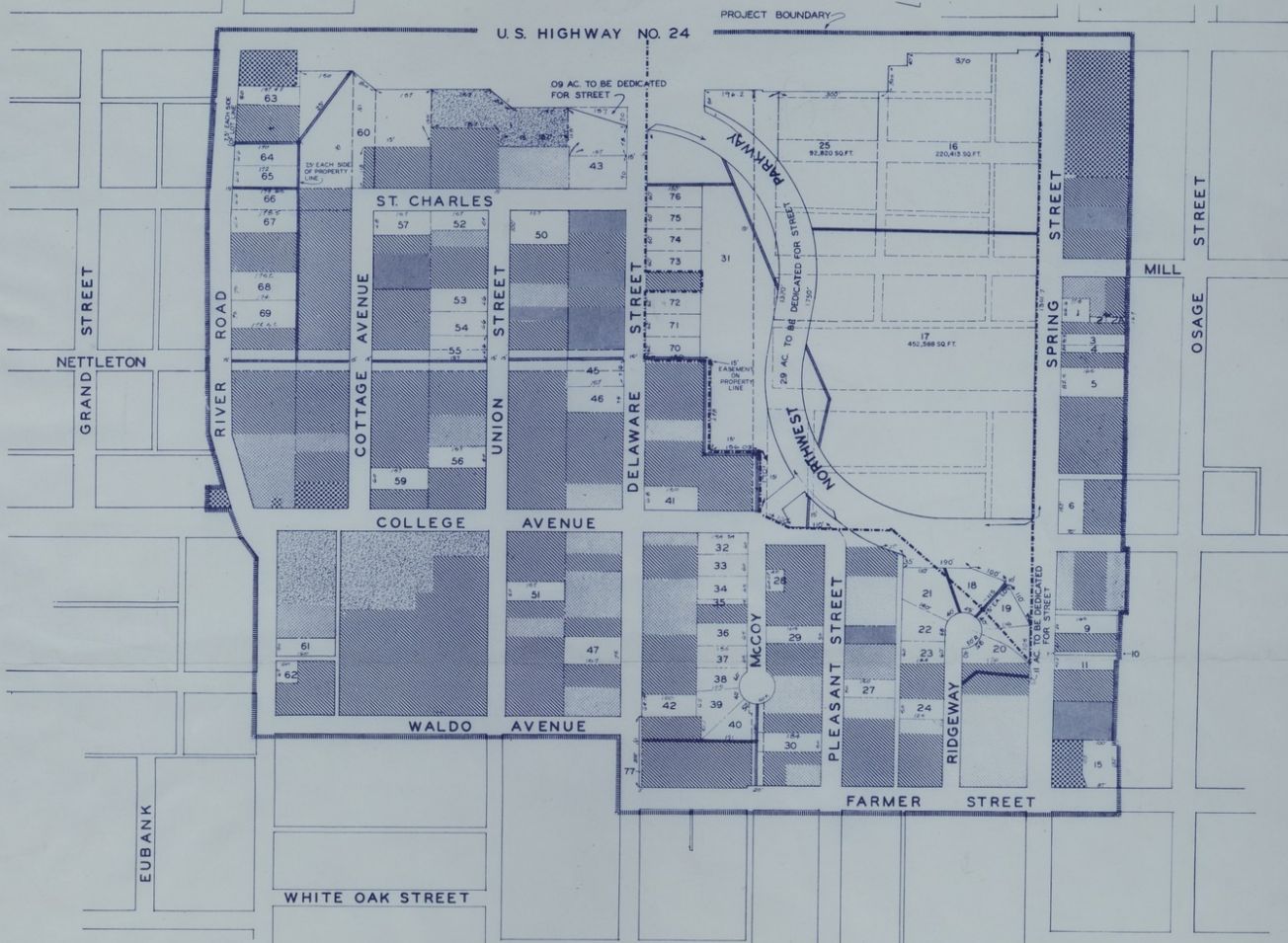


175-200
7 AC 460
5300 SF
510 M



LEGEND

- DISPOSITION PARCEL
- PARCEL NUMBER
- LOT DIMENSION
- CLEARANCE AREA BOUNDARY
- EASEMENT
- ALL EASEMENTS ARE SHOWN SCHEMATICALLY EXACT LOCATION SUBJECT TO PRECISE LOCATION OF UTILITIES
- PUBLIC - SEMI PUBLIC
- SINGLE FAMILY RESIDENTIAL
- MULTI-FAMILY
- VACANT LAND
- COMMERCIAL

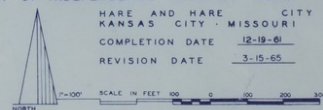
PARCEL NO.	AREA	PROPOSED LAND USE	BLDG. LINE
1	.885	GARDEN APT.	30
2	.251	DO	30
3	.883	ONE OR TWO FAMILY	30
4	.0757	DO	30
5	.3425	DO	30
6	.2459	DO	30
7	.462	DELETED	30
8	.563	DELETED	30
9	.813	ONE OR TWO FAMILY	25
10	.0383	DO	25
11	.531	DO	25
12	.8992	DELETED	25
13	.2273	DELETED	25
14	.8287	DELETED	25
15	.2737	ONE OR TWO FAMILY	25
16	2.0600	COMMERCIAL	SEE MAP
17	10.3920	GARDEN APT.	30
18	.2924	ONE OR TWO FAMILY	25
19	.2662	DO	25
20	.3080	DO	25
21	.3500	DO	25
22	.2281	DO	25
23	.1704	DO	25
24	.4223	DO	25
25	1.1300	COMMERCIAL	SEE MAP
26	.1784	DELETED	25
27	.1222	ONE OR TWO FAMILY	25
28	.0554	DO	25
29	.8882	DO	25
30	.2341	DO	25
31	2.0820	PARK	25
32	.8141	ONE OR TWO FAMILY	25
33	.8855	DO	25
34	.8141	DO	25
35	.0341	DO	25
36	.2014	DO	25
37	.2014	DO	25
38	.931	DO	30

PARCEL NO.	AREA	PROPOSED LAND USE	BLDG. LINE
39	.2458	ONE OR TWO FAMILY	35
40	.2477	DO	35
41	.2242	DO	35
42	.2140	DO	35
43	.43	DO	35
44	.263	DO	25
45	.2667	DO	25
46	.2667	DO	25
47	.2703	DO	25
48	.2237	DELETED	25
49	.2343	ONE OR TWO FAMILY	25
50	.3604	DO	25
51	.862	DO	25
52	.848	DO	25
53	.2379	DO	25
54	.2379	DO	25
55	.2379	DO	25
56	.263	DO	25
57	.2436	ONE FAMILY	25
58	.2664	DELETED	25
59	.2664	ONE OR TWO FAMILY	25
60	2.0630	PARK	25
61	.1837	ONE OR TWO FAMILY	25
62	.0514	DO	25
63	.861	DO	25
64	.2337	DO	25
65	.2336	DO	25
66	.2468	ONE FAMILY	25
67	.2416	DO	25
68	.3078	DO	25
69	.2984	DO	25
70	.0513	DO	25
71	.2135	ONE OR TWO FAMILY	25
72	.2135	DO	25
73	.2066	DO	25
74	.2066	DO	25
75	.2066	DO	25
76	.2066	DO	25
77	.2066	DO	25

PARCEL NO.	AREA	PROPOSED LAND USE	BLDG. LINE
77	.0229	DEDICATED TO CITY	---

LAND DISPOSAL PLAN

NORTHWEST PARKWAY PROJECT MO R-31
 LAND CLEARANCE FOR REDEVELOPMENT AUTHORITY
 CITY OF INDEPENDENCE · JACKSON COUNTY · MISSOURI
 HARE AND HARE CITY PLANNERS
 KANSAS CITY · MISSOURI
 COMPLETION DATE 12-19-61
 REVISION DATE 3-15-65
 CODE NO. R-225-B



SD-3

Accession Number M107

Description

A map titled "Land Disposal Plan: Northwest Parkway Project, MO R-31, Land Clearance for Redevelopment Authority, City of Independence, Jackson County, Missouri." The map, accompanied by a table, describes the usage of specific plots of land, their dimensions, and other details. Handwriting on the front reads: "175-200, 7 Acres, 300 ff, 310, M."

Date(s)

March 15, 1965

Cartographer Hare and Hare, City Planners, Kansas City, Missouri.

Keywords [Cities and towns](#)

Photo Color Color

Physical Size 24 X 18 inches

Related Collection (Plain)

Harry S. Truman Post-Presidential Papers

Restrictions Unrestricted

Scale 1 inch = 100 feet

TIF Identifier M107.tif

Rights

This item is in the public domain and can be used freely without further permission.

Note: If you use this image, rights assessment and attribution are your responsibility.

Credit: Hare and Hare, City Planners, Kansas City, Missouri.

Courtesy Harry S. Truman Library & Museum, Independence, Missouri.

Attention media: Please make note of this item's map number. Print out this page and retain it for your permissions records before downloading this image file for possible publication. Library staff cannot sign permissions forms or provide additional paperwork. The Library charges no usage fees for downloaded images. Fees are charged for higher resolution scans.